

FEATURES

- Panels are each 4mm thick with 3 layers; a sandwich of thick aluminum on both the surface and back with a strong mineral resin core in the middle for strength.
- Technical qualities provide for strength and stability, with a structure that is highly water resistant.
- Super high resolution digital images are transferred to a specialized aluminum panel that yields an appearance of genuine stone, porcelain or concrete.
- Surfaces are highly scratch resistant and are available in super high gloss finish and ultra-honed finishes.
- Monotone and two-tone wall kits are available. Continuous pattern kits (SMTWKEC) are only available in monotone colors.
- Panels are extremely lightweight, weighing 1.3 lbs/sq. ft. for easy installation and handling.
- Fabrication is done with regular carbon steel tools, using a circular saw and an aluminum cutting blade.
- Panels can be used either in the shower or on bathroom or other room walls for a luxurious natural stone look.
- Kit includes (3) panels (two 48" x 96" and one 39" x 96"), (2) flat inside corner trims in same color in 48" wide panel and (2) aluminum outside edge trims.
- 10 Year Limited Residential Warranty / 3 Year Commercial Warranty

OPTIONS

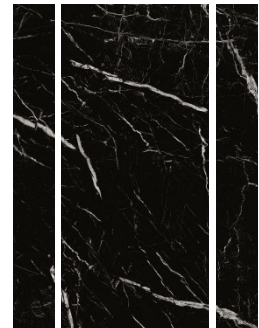
- Corner storage kits are available for installation with shower wall kits, as well as storage pods & caddies, grab bars, storage shelves, shower seats & benches are available to coordinate with the walls.

RECOMMENDED ADHESIVE *(sold separately)*

- T100 clear and T200 color-matched mildew-resistant 100% silicone adhesives.

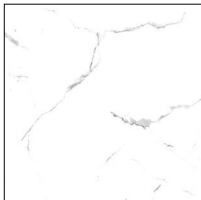
Wall Kit Models

	Model No.	Overall Size L x W x H	Actual Side Panel Width	Actual Back Panel Width	Ship Wt.(lbs)
<input type="checkbox"/>	SMTWKE603696	60"x36"x96"	(2) 48" x 96"	(1) 39" x 96"	136
<input type="checkbox"/>	SMTWKEC603696	60"x36"x96"	(2) 48" x 96"	(1) 39" x 96"	134



Continuous Pattern

To Be Specified: Monotone Finish



White Carrara **KI01**



Sabana Grey **KI31**



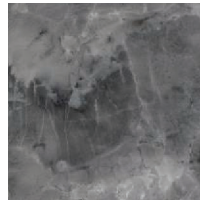
Everest **KI58**



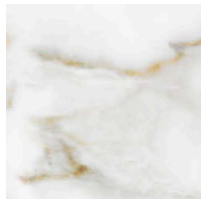
Black Carrara **KI03**



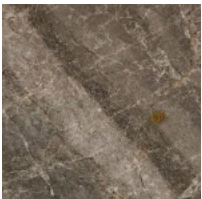
Sabana Creme **KI32**



Storm **KI63**



Everest Gold **KI80**



Ariel Desert **KI82**



Everest/Storm
***SKI58BK163**

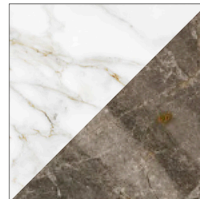
Two-Tone Finish



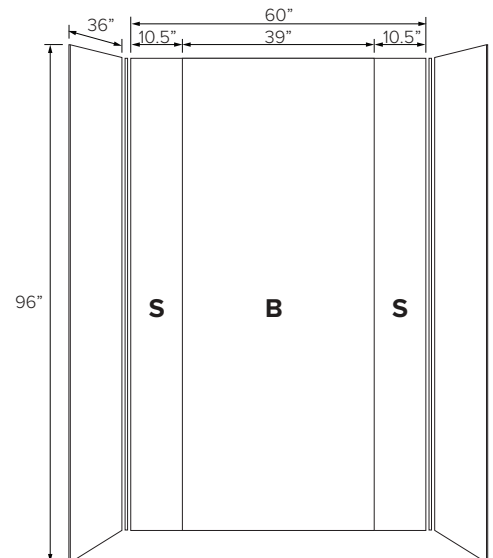
White/Black Carrara
***SKI01BK103**



White Carrara/Sabana Grey
***SKI01BK131**



Everest Gold/Ariel Desert
***SKI80BK182**



* **S** represents (2) 48"x 96" panels which can be used on two sides and back of the shower. **B** represents (1) 39"x 96" panel which is used as center of the shower back wall. Indicates Gloss (**G**) or Honed (**H**) after color code.