

## Features

- Heavy Duty 3.5mm SMC Sheet Molding Compound Material
  - 2 Unique Patterns; 3"x8" Subway Tile and 12"x24" Vertical Tile
  - Walls can be trimmed to size easily in the field
  - Walls include a brushed aluminum inside cove and finished end trim pieces
  - Available in 96" height and 36" depth
  - Transition Height Models are Pre-Trimmed at 84"/72" high with aluminum joining trim separator and a 12"/24" height extension for easy installation up to a 96" height.
  - SMC color goes all the way through
  - Warranty 5 Year Limited Residential/ 3 Year Commercial
- Optional** SMWSV1627, SMWSV1639 & SMWSV1496 Wall Storage Valets available in the same colors as the walls to provide convenient storage

## Stock Sized Specified Models

	Model No.	Back Wall	Side Wall	Height
<input type="checkbox"/>	SMPWK603696	60"	36"	96"

## TRANSITION Stock Sized Specified Models

	Model No.	Back Wall	Side Wall	Height
<input type="checkbox"/>	SMPWKX60368412	60"	36"	96"
<input type="checkbox"/>	SMPWKX60367224	60"	36"	96"

## To Be Specified: Color

3"x8" Subway	12"x24" Vertical
<input type="checkbox"/> 131 White 3x8	<input type="checkbox"/> 231 White 12x24
	<input type="checkbox"/> 239 Grey 12x24



White

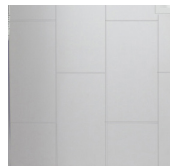


Grey

## Wall Patterns



3x8 Subway Tile  
White Only



12x24 Vertical Tile

## Codes/Standards

The specified model meets or exceeds the following:

ASTM E662 CSA B45.5/APMO Z124

**Notes:** Install this product according to the installation instructions.

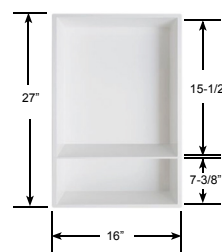


12x24 Vertical Tile

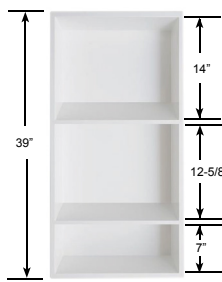


3x8 Subway Tile

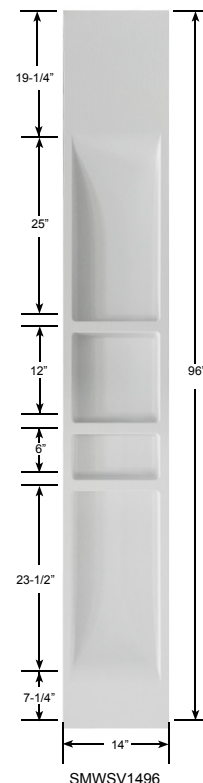
## Optional SMC Storage Pods



SMWSV1627



SMWSV1639



SMWSV1496