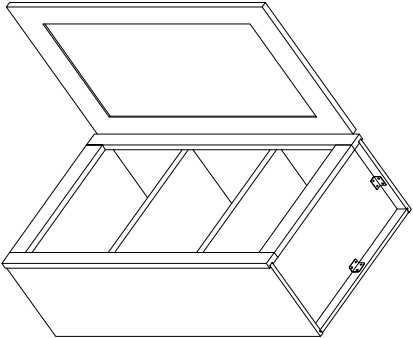
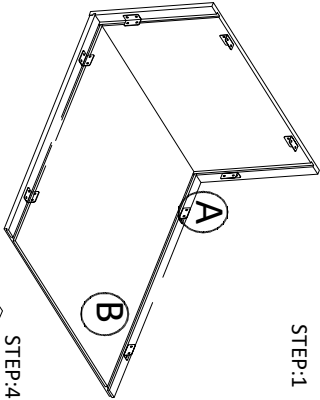


W0930, W1230, W1530, W1830, W2130, W1530GD  
W0936, W1236, W1536, W1836, W2136, W1536GD  
W0942, W1242, W1542, W1842, W2142, W1542GD  
ASSEMBLY INSTRUCTIONS

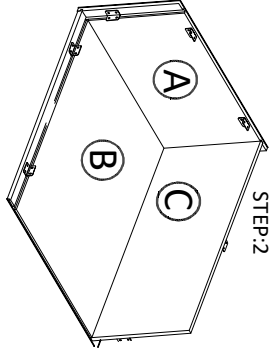
- STEP 1: Joint side panel with back panel  
STEP 2: Joint top panel with side panel  
STEP 3: Joint bottom panel with side panel  
STEP 4: Attach frame on  
STEP 5: Put on the adjustable shelves  
STEP 6: Fix door onto the frame and adjust the cover-space



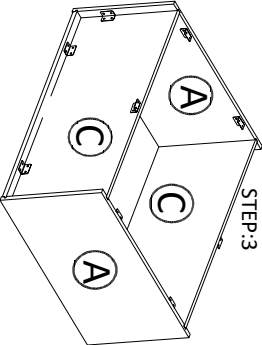
PARTS LIST		
NO.	Description	QTY
A	SIDE PANEL	2
B	BACK PANEL	1
C	TOP&BOTTOM PANEL	2
D	FACE FRAME	1
E	ADJUSTABLE SHELF 2 OR 3	
F	CABINETS DOOR	1



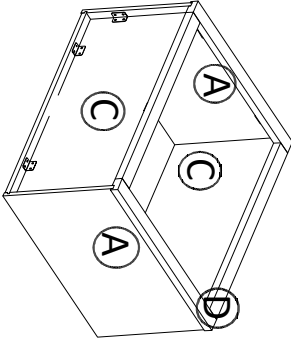
STEP:1



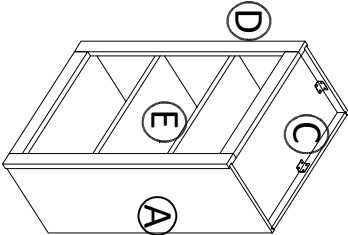
STEP:2



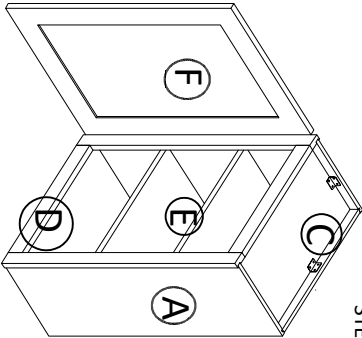
STEP:3



STEP:4



STEP:5



STEP:6

7	SOFTCLOSE HINGE	2	
6	3/4" ROUND HEAD SCREW	2	
5	BUMPER	2	
4	SHELF CLIP	8	
3	9/16"ROUND HEAD SCREW/40		
2	CLEAT	10	
1	1"FLAT HEAD SCREW FOR CARCASS	4	
NO.	Description	QTY	PICTURE

HARDWARE LIST