



Lawson™

60" Air Massage Bath

77261100



Features

- Compression molded from our exclusive solid Vikrell® material.
- Durable high-gloss finish.
- 3-speed blower with integrated 300 W heater, air switch control, and grounding-type plug-in cord.
- 29 air jets.
- Optional attached apron 76268100.
- Optional flange kit available for tile-in installation 71287100-NA.
- Optional flange kit provides continuous rim support and additional water containment benefits.
- 60-1/4" (1530 mm) x 32" (813 mm) x 20-5/16" (516 mm) unit rough-in dimensions include 5/16" (8 mm) tall nailing flange.
- 60" (1524 mm) x 32" (813 mm) x 20-5/16" (516 mm) complete unit finished dimensions.

Recommended Accessories

76268100 Apron with Access Panel



Codes/Standards



ASME A112.19.7/CSA B45.10
CSA B45.5/IAPMO Z124
ASTM E162
ASTM E662
UL 1795
CSA 22.2 No. 218.2
Greenguard UL 2818 - Gold

STERLING® Warranty - Fixtures Made of Solid Vikrell Material

See website for detailed warranty information.

Available Color/Finishes

Color tiles intended for reference only.

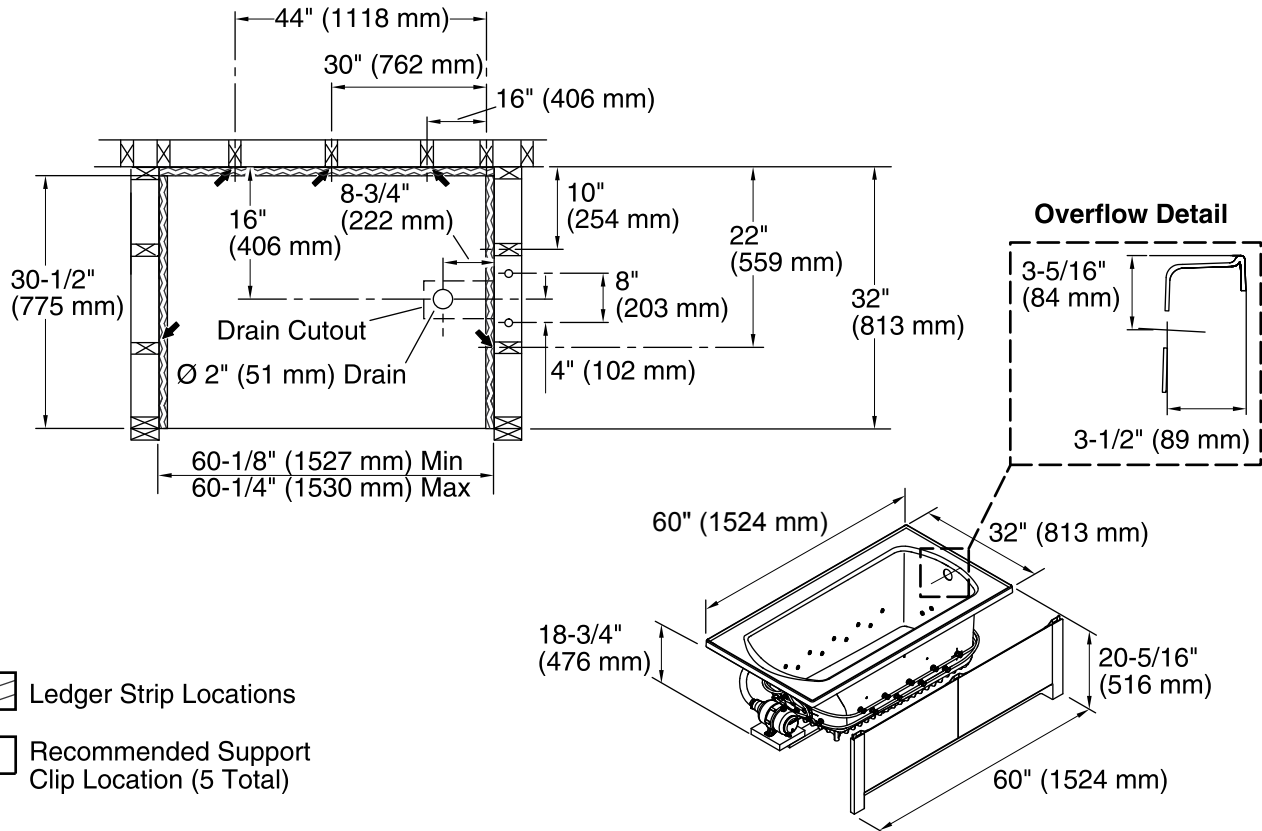
Color	Code	Description
	0	White
	96	KOHLER Biscuit

USA/Canada: 1-800-STERLING (1-800-783-7546)

Kohler Co. reserves the right to make revisions without notice to product specifications.

For the most current Specification Sheet, go to www.sterlingplumbing.com.

7-18-2016 01:29



Required Electrical Service

One dedicated circuit required, protected with Class A Ground-Fault Circuit-Interrupter (GFCI) or Residual Current Device (RCD).

Blower, Heater: 120 V, 15 A, 60 Hz

Technical Information

All product dimensions are nominal.

Installation: Drop-in
 Drain location: End
 Basin area, bottom: 44" x 21-1/2" (1118 mm x 546 mm)
 Basin area, top: 51" x 22-3/4" (1295 mm x 578 mm)
 Water depth: 15-1/4" (387 mm)
 Water capacity: 53 gal (200.6 L)
 Electrical component rating: Blower: 120 V, 9.2 A, 60 Hz
 Heater: 300 W
 Minimum flat for door: 3" (76 mm)

Notes

Install this product according to the installation instructions.

Provide one grounded electrical outlet within 24" (610 mm) of each component.

Size the drain cutout to fit the drain assembly that will be used.

Blower service access is required.

Studs should be positioned roughly as shown.