



# McAllister®

## 23-3/4" undermount single-bowl kitchen sink

### 50200

#### Features

- No faucet holes; requires wall- or counter-mount faucet
- 9-3/4" depth provides generous workspace
- 3-3/4" (95 mm) drain opening
- Stainless steel with luster finish

#### Material

- Premium 18-gauge stainless steel

#### Installation

- Undermount

#### Recommended Products/Accessories

- K-23726 Drain treatment
- K-23729 Stainless steel cleaner

#### Optional Products/Accessories

- 7400 Stainless Steel Sink Drain and Strainer



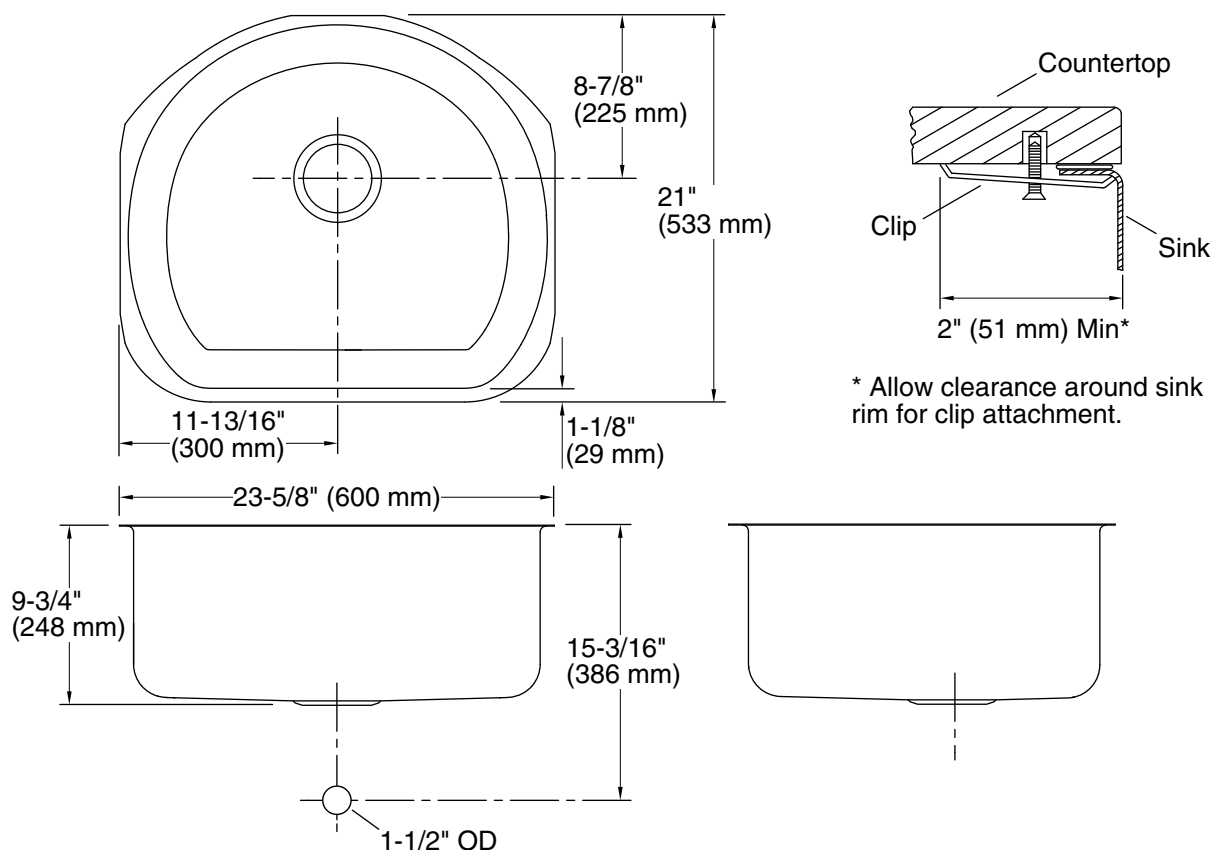
#### Codes/Standards

- ASME A112.19.3/CSA B45.4
- IAPMO Certification

#### STERLING® Stainless Steel Sinks

#### Lifetime Limited Warranty

See website for detailed warranty information.



### Technical Information

All product dimensions are nominal.

Bowl area (Only):      Length: 22" (559 mm)  
                                  Width: 19" (483 mm)  
                                  Bowl depth: 9-1/2" (241 mm)  
                                  Water depth: 9-1/2" (241 mm)

Drain hole:              3-3/4" (94 mm)

Template:                1315845-7, required, included

### Notes

Install this product according to the installation instructions.