

Installation Instructions

NOTE - check for any damage that may have occurred during shipping or handling. Report any damage immediately.

1. Framing Pocket Construction

See Figure 2 Pocket Dimensions

CAUTION:

It is possible for squeaking to develop if this base is installed over a sub floor other than plywood. In order to prevent this squeaking, a pad such as roofing felt should be placed between the base and sub-floor.

2. Plumbing Installation

The supply line to the tub spout and valves should be located before the unit is installed. Locate the drain line and trap using dimensions shown in Figure 2.

Install waste and overflow fittings in openings provided in the bath in accordance with fitting manufacturer's instructions. Determine the drain and overflow required by using the dimensions shown.

3. Bath Installation

- Cut ledger strips and install as shown.
- Move bath into the framing pocket. Make sure the bath is level and the ledger strips on all three sides are in contact with the unit. Cut out the protector from the carton and place it into the bath.
- Optional Apron Installation. While holding the apron from the bottom, slide it up into position. Push the apron back to contact the floor blocks (see figure 2). With large head roofing nails, nail end flanges to studs.
- Attach the tie down clips to the framing studs. Attach the clips with large head roofing nails driven into the studs. Refer to Figure 2.
- Silicone sealant may be used to finish the joint between the unit and the drywall. Apply sealant after wall finish has been applied.

MODEL-OC-OV-60

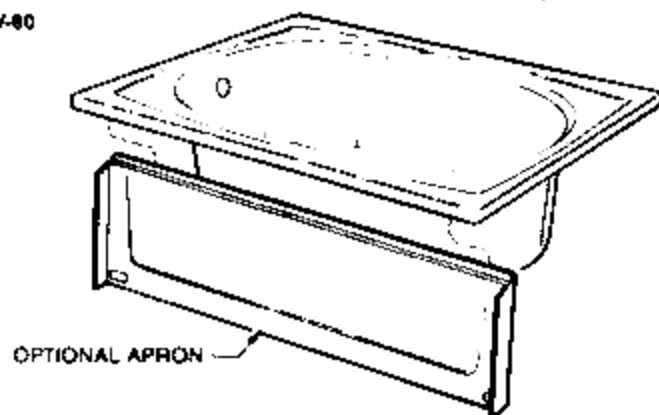


Figure 1

4. Island Installation

- Prepare framing structure using dimensions as shown in Figure 3.
- Lower bath into framed structure - make sure the feet are firmly on the floor and the bath's rim is in contact with the structure completely.
- Attach the bath to the structure by using the tie down clips. Screws are not provided. Refer to figure 2 for clip position.

5. INITIAL CLEANING

To remove typical dirt and grime left from construction:

- Remove any loose debris from the surface prior to cleaning.
- If possible, soak bathing unit with warm water and mild detergent to loosen remaining soil.
- Drain unit. If soil remains, clean the area that is stained with a non-abrasive multi-purpose cleaner. Rub the area with a non-abrasive applicator made of nylon, polyethylene or polyester (i.e. Bathub Scrub™ applicator by 3M Company).
- Remove nail rust with Bar Keepers Friend Cleanser®.

During construction or remodeling things such as:

Tar (Asphalt) Ceramic adhesive
Paint (oil base) Vinyl adhesive

can be removed with:

Acetone
MEK (methyl Ethyl Ketone)
Turpentine
Xylene
Toluene

Saturate a clean white cotton cloth with one of the above solvents, rub the affected area lightly until the residue disappears. These solvents are highly flammable and should be used sparingly. Work in a well ventilated area. **DO NOT SMOKE** while using these solvents and do not work near an open flame. Solvents should not be allowed to go down the drain or come in contact with a plastic drain grate, pipe or fittings. Exercise extreme caution and **KEEP OUT OF REACH OF CHILDREN**. These solvents can be purchased in your local hardware store.

6. REGULAR CLEANING

Sterling Plumbing Group recommends the use of one of the following cleaning products or multi-purpose cleaners for regular cleaning (weekly) of our VIKRELL Swirl Gloss bathing products.

Spic N Span Powder
Top Job

Mr. Clean® Soft Abrasive Cleanser
Safar for Surfaces Comet®

WARNING

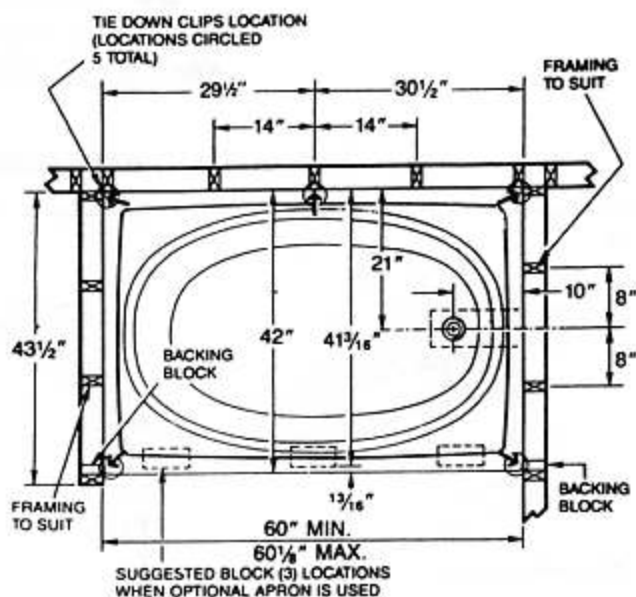
Constant use of abrasive cleaning agents can result in surface dullness and discoloration.

FOLLOW MANUFACTURER'S DIRECTIONS WHEN USING CLEANING AGENTS

Rust/Mineral Deposits

To remove tough stains, rusts and mineral deposits Sterling Plumbing Group recommends the use of "Bar Keeper's Friend®". **CAUTION!** This product is not to be used for regular cleaning.

STANDARD INSTALLATION



—NOTE—
TO AVOID LOSS OF WARRANTY.
THE OC-OV-60 MUST BE INSTALLED ON A LEDGER STRIP INSTALL 16 1/2" FROM TOP OF STRIP TO HIGHEST POINT ON SUBFLOOR TWO NAILS AT EACH STUD ARE REQUIRED.
LEDGERS MUST BE USED ON ALL THREE SIDES OF THE BATH, NOT JUST THE BACK.
THE BATH'S FEET MUST FIRMLY TOUCH FLOOR. SHIMS SHOULD BE USED.
DO NOT INSTALL THE BATH OVER OPEN FLOOR JOISTS.

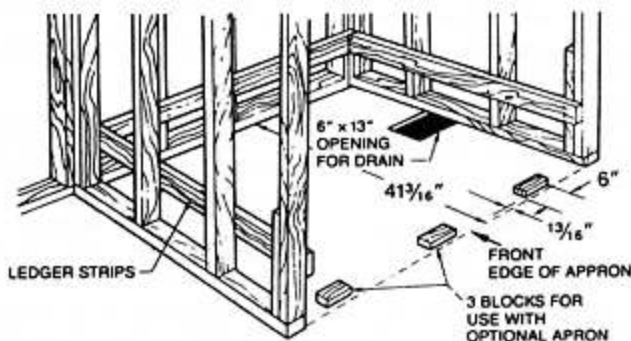
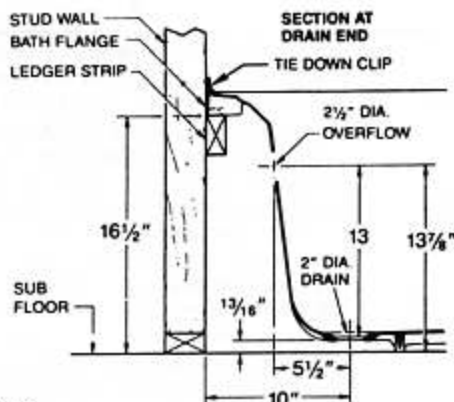
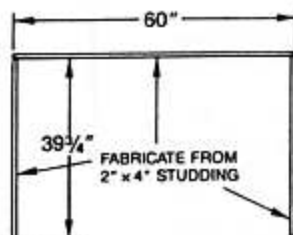


Figure 2

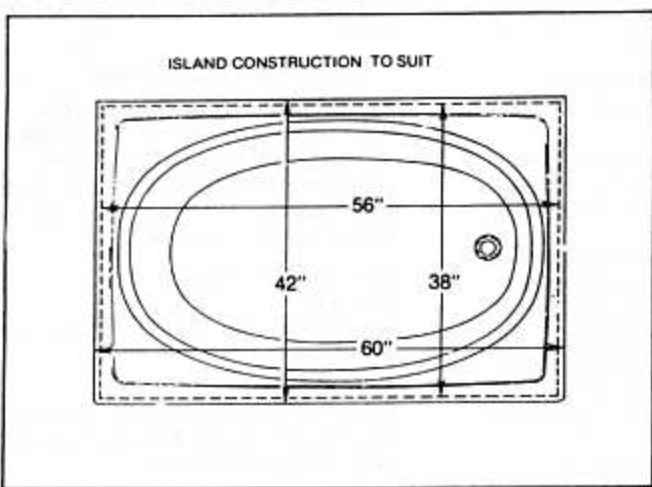
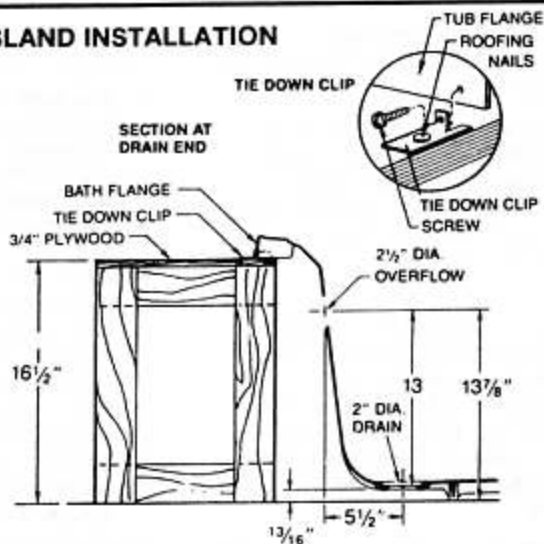


Figure 3

ISLAND OPENING SUPPORT DIMENSIONS

ISLAND INSTALLATION



Kohler Company
444 Highland Drive
Kohler, Wisconsin 53044
1-888-STERLING
1-888-783-7546

—NOTE—
This unit has been designed for right or left hand use. A front apron is also available as a separate item.