



# Unwind®

59" x 30" back-to-wall bath

**96133**

## Features

- Open-back design is perfect for small spaces and makes faucet installation easier
- Center toe-tap drain
- Wide ledge on one side is ideal for deck-mount faucet and/or handshower
- Integral lumbar support on both ends
- Built-in integral overflow
- 4.5" drain-to-floor clearance for above-floor drain installation
- Rectangle shape allows for corner or back-to-wall installation

## Material

- Acrylic

## Installation

- Above-floor-drain (AFD) rough-in
- Concealed adjustable legs make leveling during installation easy

## Included Components

1381626-0 Drain Assembly, White



## Codes/Standards

CSA B45.5/IAPMO Z124  
ASTM E162  
ASTM E662  
IAPMO Certification


## STERLING® Vikrell® or Acrylic Baths and Shower Bases Ten-Year Limited Warranty

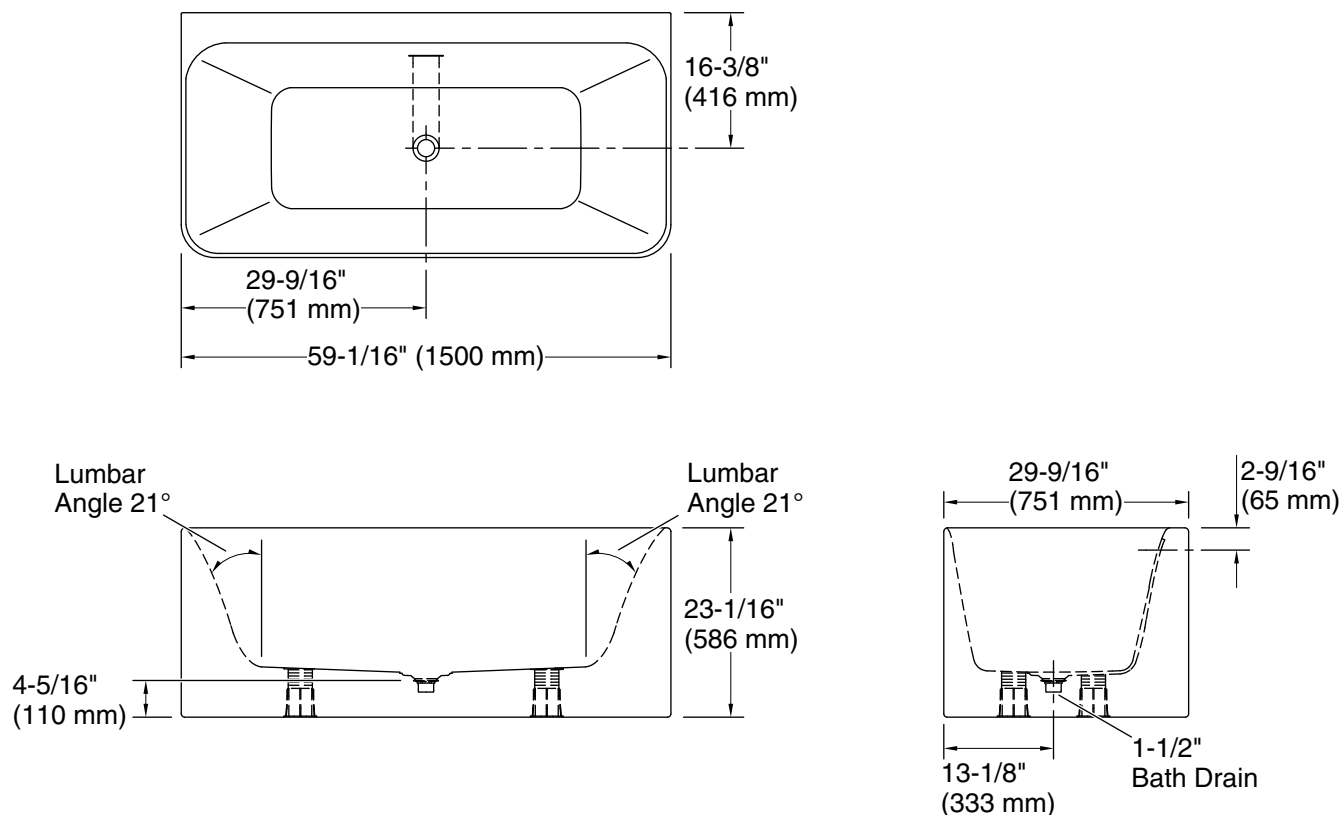
See website for detailed warranty information.

## Available Colors/Finishes

*Color tiles intended for reference only.*

Color	Code	Description
-------	------	-------------

	0	White
---	---	-------



### Technical Information

All product dimensions are nominal.

Drain location:	Center
Basin area, bottom:	39-1/16" x 14-11/16" (992 mm x 373 mm)
Basin area, top:	58" x 25-3/8" (1473 mm x 645 mm)
Water depth:	14-9/16" (370 mm)
Water capacity:	56 gal (212 L)

### Notes

Install this product according to the installation instructions.

Measure your actual product for roughing-in details.

The hot water supply should be 70% of the capacity of the bath or greater. Installations will vary.

Do not support the load weight of the bath by the rim.

If installing a rim-mount faucet, make sure there is no interference above or below the deck before drilling any holes.