



# STORE+®

## 60" x 32" Vikrell® bath/shower, left above-floor drain

### 71420112



#### Features

- Tongue-and-groove modular design allows for easy installation during any phase of construction
- Includes four rimmed shelves, two caddies, two hooks, and two soap dishes with towel bar
- Dishwasher-safe shelves and bins snap into place; no tools required
- Holds up to 30 bottles
- Easy-to-clean, durable high-gloss finish
- Innovative Dry-Block™ seal and channeled water containment system form watertight seams

#### Material

- Compression-molded from our exclusive solid Vikrell® material

#### Installation

- Alcove
- Caulk-free installation
- Above-floor-drain (AFD) rough-in
- Left drain

#### Recommended Products/Accessories

K-23726 Drain treatment  
K-23733 Vikrell® cleaner

#### Included Components

71424100 60" x 32" Vikrell® bath/shower wall set  
71121112 60" x 32" Vikrell® bath, left above-floor drain



#### Codes/Standards

CSA B45.5/IAPMO Z124  
ASTM E162  
ASTM E662  
HUD, UM Bulletin 73  
IAPMO Certification


#### STERLING® Vikrell® or Acrylic Baths and Shower Bases Ten-Year Limited Warranty

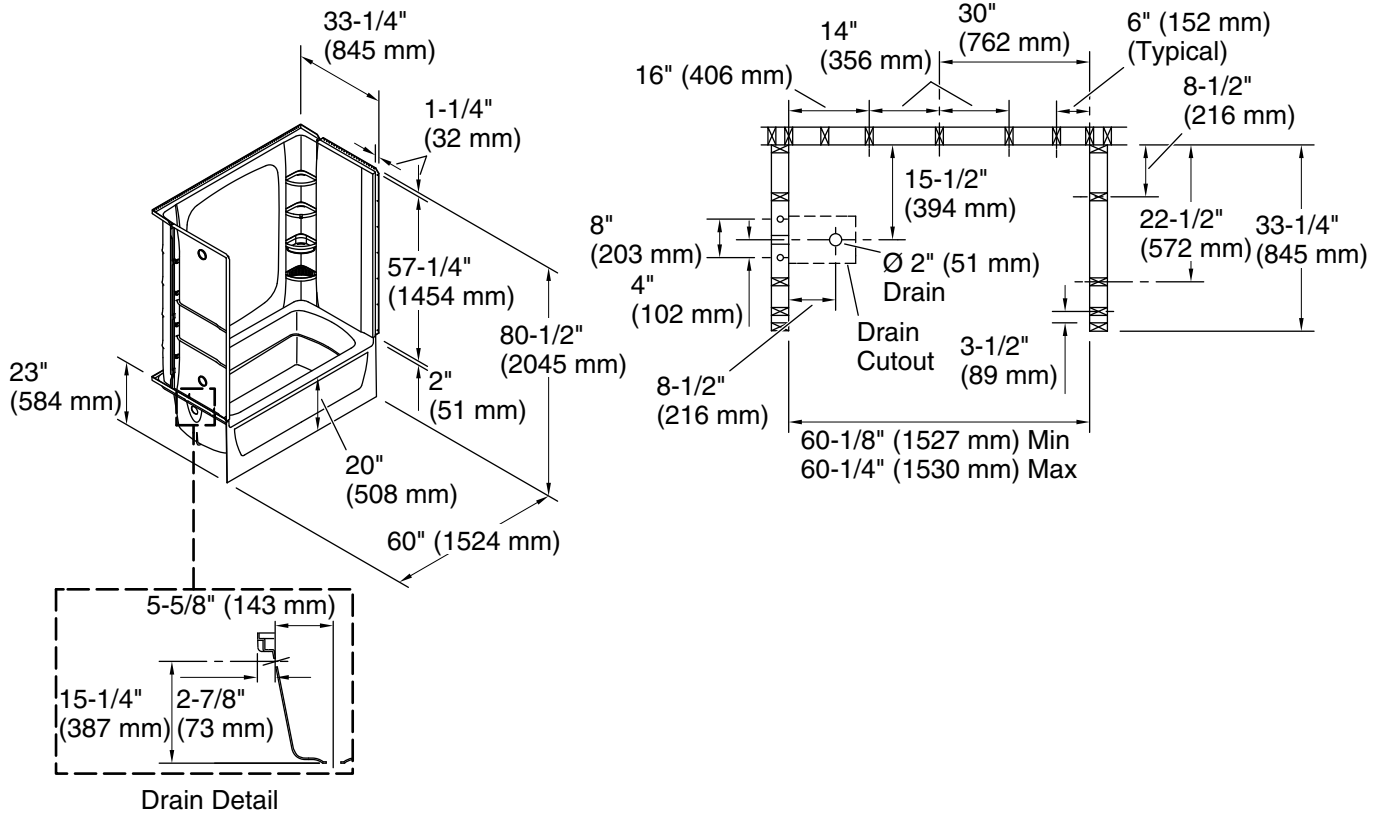
See website for detailed warranty information.

#### Available Colors/Finishes

*Color tiles intended for reference only.*

##### Color Code Description

	0	White
---	---	-------



### Technical Information

All product dimensions are nominal.

Drain location:	Left
Weight:	133.1 lbs (60.4 kg)
Water depth:	13" (330 mm)
Water capacity:	51 gal (193.1 L)
Minimum flat for door:	3" (76 mm)
Maximum door height:	58-3/4" (1492 mm)
Maximum door width:	57-11/16" (1465 mm)

### Notes

Install this product according to the installation instructions.

Studs should be positioned roughly as shown.

Double studding is recommended for pivot shower door installations.