



# STORE+®

## 60" x 30" Vikrell® bath/shower with Aging in Place backerboards, right above-floor drain

### 71470128



#### Features

- Tongue-and-groove modular design allows for easy installation during any phase of construction
- Includes four rimmed shelves, two caddies, two hooks, and two soap dishes with towel bar
- Dishwasher-safe shelves and bins snap into place; no tools required
- Holds up to 30 bottles
- Easy-to-clean, durable high-gloss finish
- Factory-installed Aging in Place backerboards for future grab bar installation
- Innovative Dry-Block™ seal and channeled water containment system form watertight seams

#### Material

- Compression-molded from our exclusive solid Vikrell® material

#### Installation

- Alcove
- Caulk-free installation
- Above-floor-drain (AFD) rough-in
- Right drain

#### Recommended Products/Accessories

K-23726 Drain treatment  
K-23733 Vikrell® cleaner

#### Included Components

71171122 60" x 30" Vikrell® bath, right above-floor drain  
71474106 60" x 30" Vikrell® bath/shower wall set with Aging in Place backerboards



#### Codes/Standards

CSA B45.5/IAPMO Z124  
ASTM E162  
ASTM E662  
HUD, UM Bulletin 73  
IAPMO Certification


#### STERLING® Vikrell® or Acrylic Baths and Shower Bases Ten-Year Limited Warranty

See website for detailed warranty information.

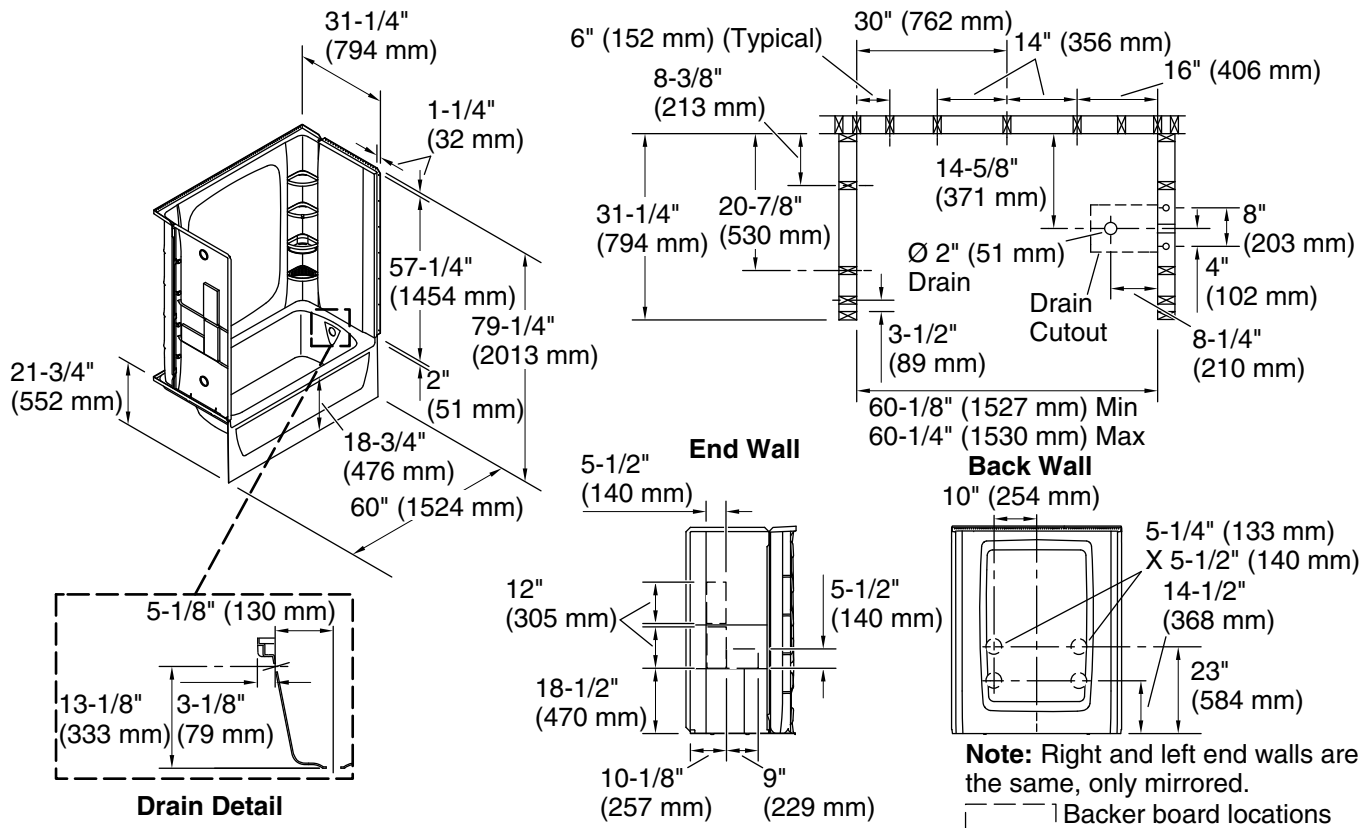
#### Available Colors/Finishes

*Color tiles intended for reference only.*

#### Color Code Description

	0	White
---	---	-------

**60" x 30" Vikrell® bath/shower with Aging in Place  
backerboards, right above-floor drain  
71470128**



**Technical Information**

All product dimensions are nominal.

Drain location:	Right
Basin area, bottom:	45" x 20" (1143 mm x 508 mm)
Basin area, top:	53" x 23" (1346 mm x 584 mm)
Weight:	126.5 lbs (57.4 kg)
Water depth:	11-1/4" (286 mm)
Water capacity:	44 gal (166.6 L)
Minimum flat for door:	2-3/4" (70 mm)
Maximum door height:	56-3/4" (1441 mm)
Maximum door width:	57-11/16" (1465 mm)

**Notes**

Install this product according to the installation instructions.

Studs should be positioned roughly as shown.

Double studding is recommended for pivot shower door installations.

Felt pad not required for installation.