



# Springdale®

16-1/4" undermount single-bowl bar sink  
**T11448**

## Features

- No faucet holes; requires wall- or counter-mount faucet
- 8" (203 mm) depth
- 3-3/4" (95 mm) drain opening
- Stainless steel with luster finish

## Material

- Premium 18-gauge stainless steel

## Installation

- Undermount

## Recommended Products/Accessories

7400 Stainless Steel Sink Drain and Strainer  
11862 Sink Rack  
K-23726 Drain treatment  
K-23729 Stainless steel cleaner



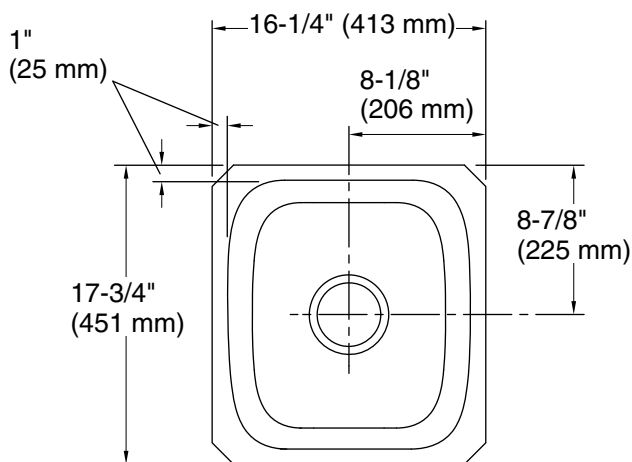
## Codes/Standards

ASME A112.19.3/CSA B45.4  
IAPMO Certification

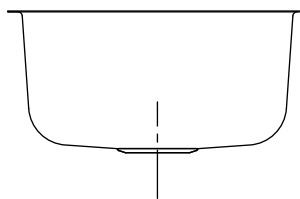
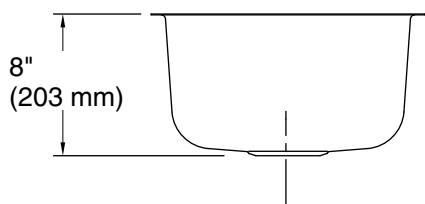
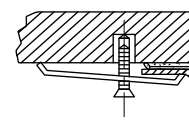
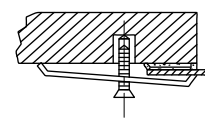
## STERLING® Stainless Steel Sinks

### Lifetime Limited Warranty

See website for detailed warranty information.



Mounting bracket assembly provides a secure installation.



### Technical Information

All product dimensions are nominal.

Bowl configuration: Single

Min. base cabinet width: 21" (533 mm)

Bowl area (Only): Length: 16-1/4" (413 mm)  
Width: 17-3/4" (451 mm)  
Bowl depth: 8" (203 mm)  
Water depth: 8" (203 mm)

Drain hole: 3-3/4" (95 mm)

Template: Undermount, 1315843-7, required, included

### Notes

Install this product according to the installation instructions.

Use the supplied cut-out template to select either a hidden or exposed rim.

Measure your actual product for roughing-in details.