

FEATURES

- Round vessel sink for above counter installation.
- No overflow.
- No faucet hole drillings.
- 1 3/4" drain hole. Drain assembly sold separately.
- Hand crafted design made of fireclay, which is clay heated to an extremely high 1600° making the sink hard and durable, with a beautiful high shine.
- Basin area: 14 9/16".
Water depth: 5 1/4"
- 1 Year Limited Residential Warranty



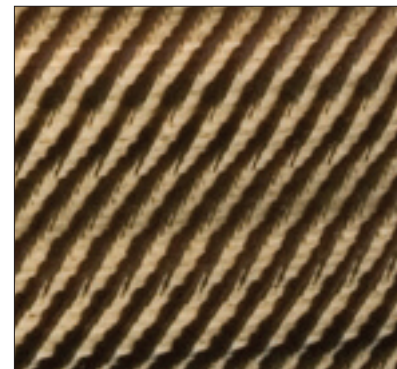
TOILETS/LAVS

COLORS

- Brown/White

Specified Model

| | MODEL NO. | DESCRIPTION | Width | Depth | Height | Ship Wt. lbs. |
|-------------------------------|-----------|----------------------|---------|---------|----------|---------------|
| ABOVE COUNTER LAVATORY | | | | | | |
| <input type="checkbox"/> | 99VSL009 | Lavatory Vessel Bowl | 15 3/4" | 15 3/4" | 5 11/16" | 27 |



Compliance Certifications -

Meets or Exceeds the Following Specifications

- ICC/ANSI A117.1
- CSA
- IAPMO/UPC®
- ADA

