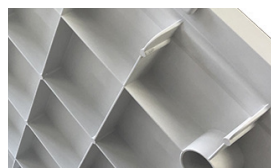
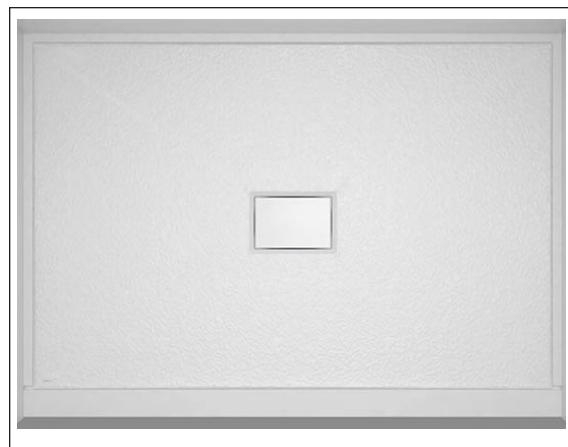


FEATURES

- Single threshold for alcove installation.
- SMC sheet molding compound is made from a composite material composed of resin, fiberglass, and stone filler. Compression molded for precision radius and angles. Strong, lightweight, slip resistant and scratch resistant.
- Beautiful, easy to clean and ultra-safe stone-look slip resistant texture provides comfortable, safe footing.
- Ultra low 2.6" threshold front curb for easy access. Ultra wide 3.5" threshold width to hold modern barn door shower doors.
- Heavy duty 1" high integral tiling flange.
- Super strong base with ribbed construction. Up to 21% heavier than competitive bases.
- Color matched lift-off drain cover allows for easy cleaning and conceals a conventional shower drain. Eliminates the need for decorative drain covers to match faucetry. Drain not included.
- 10 Year Limited Residential Warranty / 3 Year Commercial Warranty



Ribbed Struture for superior strength. Up to 21% heavier than competitive bases.

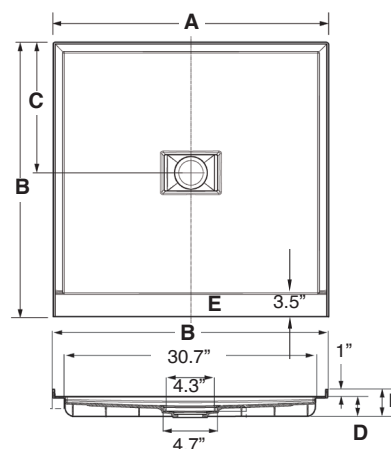


Modern Slip Resistance with a stone look texture. Easy to clean as well as slip resistant.

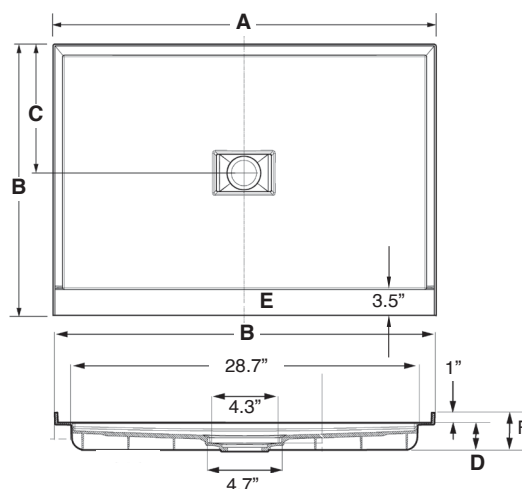
Specified Model

FCU Ultra Low Shower Bases								
	Model	A	B	C	D	E	F	Wt.
<input type="checkbox"/>	FLU3636C	36"	36"	18"	2.6"	3.5"	3.6"	41
<input type="checkbox"/>	FLU4834C	48"	34"	17"	2.6"	3.5"	3.6"	51

Model: FLU3636C



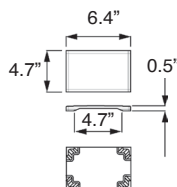
Model: FLU4834C




To Be Specified: Color

<input type="checkbox"/>	31 White			
<input type="checkbox"/>	32 Cameo	White 31	Cameo 32	Grey 39
<input type="checkbox"/>	39 Grey			

Drain Cover Detail



Compliance Certifications - Meets or Exceeds the Following Specifications

- IGC 154-2012
- ASME A112.18.1 / CSA B125.125.1-11
- IAPMO 
- cUPC®