

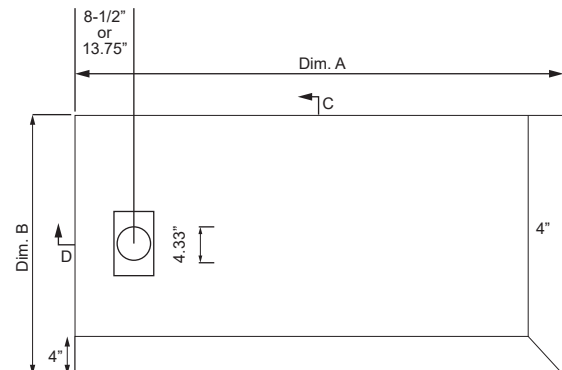
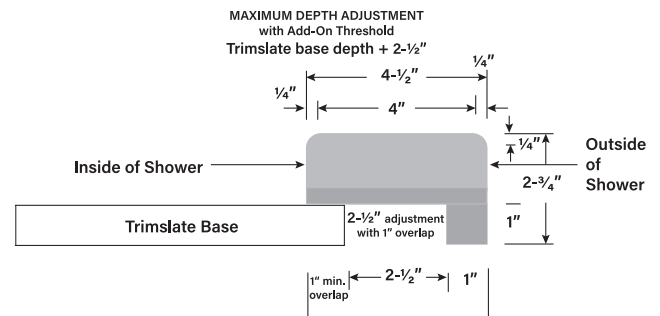
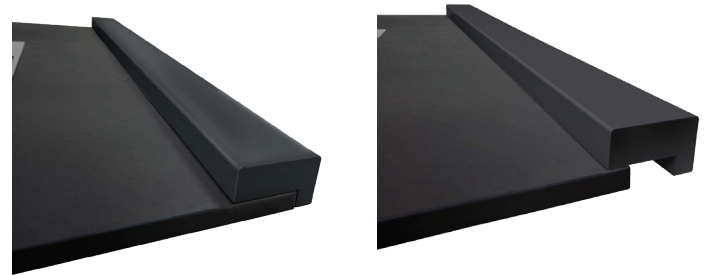
Features

- Heavy Duty SMC Sheet Molding Compound Material
- Trimslate shower bases with our unique adjustable depth threshold.
- Maximum depth and width can be adjusted by up to 2-1/2" without any trimming of the base.
- Trimslate bases can also be customized in the field to fit your space. Trim up to 4" in width from side opposite drain or up to 2" in depth away from drain.
- Each base is supplied with two 80" long add on trimmable thresholds with a 45-degree mitered edge.
- The threshold has a 4" wide flat surface to accommodate shower doors.
- SMC color-matched drain cover conceals a conventional 2" shower drain (not supplied).
- The slate floor has a lightly textured and slip-resistant surface that makes it safe, yet remains easy to clean.
- 13-3/4" center drain location for FZSDT models.
- 8-1/2" center drain location for FZSDTR models. Bases are designed to replace bathtub as drain position will align with existing bathtub drain.
- 1" high aluminum tiling flange included.
- 10 Year Limited Residential / 3 Year Commercial Warranty


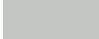
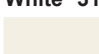



Stock Sized Specified Models

	Model No.	Min Length A	Max Length A	Min Width B	Max Width B	Height
<input type="checkbox"/>	FZSDT6736	68"	70.5"	36.5"	39"	2.75"
<input type="checkbox"/>	FZSDT7236	71.9"	74.4"	36.5"	39"	2.75"
<input type="checkbox"/>	FZSDTR6032	60.1"	62.6"	32.5"	35"	2.75"
<input type="checkbox"/>	FZSDTR6036	60.1"	62.6"	36.5"	39"	2.75"
<input type="checkbox"/>	FZSDTR6332	64"	66.5"	32.5"	35"	2.75"
<input type="checkbox"/>	FZSDTR6336	64"	66.5"	36.5"	39"	2.75"



To Be Specified: Color

<input type="checkbox"/>	31 White		
<input type="checkbox"/>	32 Cameo	White 31	Dk Grey 40
<input type="checkbox"/>	40 Dark Grey		
<input type="checkbox"/>	09 Black	Cameo 32	Black 09

Meets or Exceeds the Following Specification

• ASME A112.18.1 / CSA B125.125.1-11

• IGC 154-2012 • cUPC® • IAPMO 