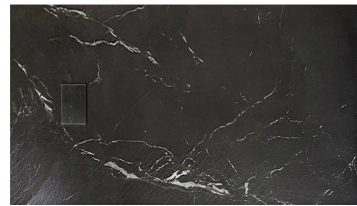
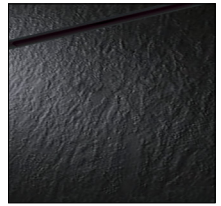


Features

- Lightweight, low profile single, double or peninsula shower base with natural stone effect.
- Heavy Duty SMC Sheet Molding Compound Material.
- Ultra low 1" threshold front curb for easy access. After underlayment, finishes flush with most finished floors.
- Easy installation for new and existing construction.
- Bases can be trimmed in the field to fit your space.
- Slip-resistant lightly textured slate floor maintains an easy to clean surface.
- Optional threshold can be added to form a conventional base.
- **End drain** models include a SMC color-matched drain cover. Drain not included.
- **End drain** models designed for tub replacement.
- 10 Year Limited Residential/ 3 Year Commercial Warranty.



Modern Slip Resistance with a stone look texture. Easy to clean as well as slip resistant.



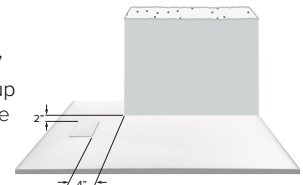
Stock Sized Specified Models

	Model No.	Length A	Width B	Width C	Height
<input type="checkbox"/>	FZSP6032L/R	59.1"	31.5"	15.75"	1"
<input type="checkbox"/>	FZSP6036L/R	59.1"	35.5"	17.75"	1"

CUSTOMIZABLE BASE

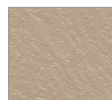
Note: Bases can be built to accommodate unique sizes. Notches can also be cut from the bases to allow for columns in a corner.

Base can be built to custom sizes within certain limitations. Can be trimmed up to 4" in width away from side opposite drain or up to 2" from depth on end drain models. Base is designed to be used as a single, double or triple threshold in stock sizes.

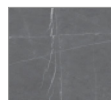


To Be Specified: Color

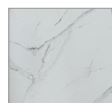
<input type="checkbox"/>	33 Beach
<input type="checkbox"/>	39 Ashy Grey
<input type="checkbox"/>	60 Calcite
<input type="checkbox"/>	61 Sterling Black



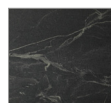
Beach 33



Ashy Grey 39



Calcite 60



Sterling Black 61

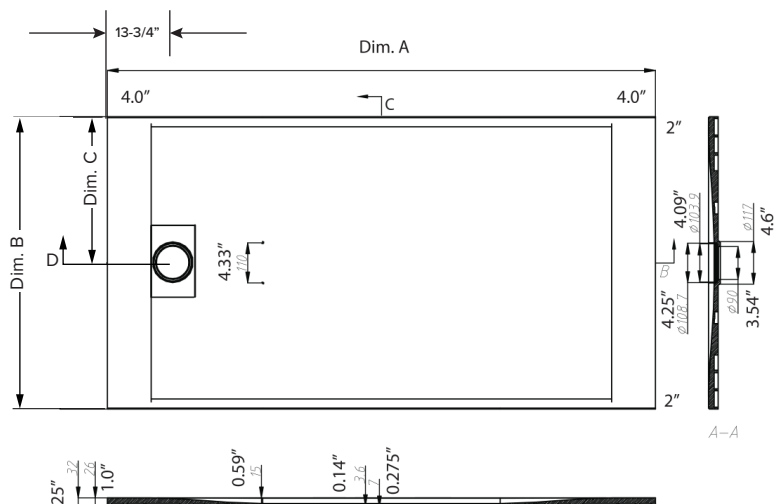
Codes/Standards

The specified model meets or exceeds the following:

ASTM E662

CSA B45.5/IAPMO Z124

Notes: Install this product according to the installation instructions.



SHOWER BASES