

Features

- Heavy Duty SMC Sheet Molding Compound Material
- Light weight. Natural stone effect.
- 63" length bases meet ADA requirements
- Bases can be custom sized within a range. See chart below for range sizing.
- SMC color-matched drain cover conceals a conventional 2" shower drain (not supplied).
- Stock bases can be used as a Single, Double or Triple Threshold
- Ultra low 1" threshold front curb for easy access. After underlay ment and finished floor virtually a flush entrance to the shower.
- Slip-resistant lightly textured slate floor maintains an easy to clean surface
- 10 Year Limited Residential/ 3 Year Commercial Warranty

Stock Sized Specified Models

	Model No.	Length A	Width B	Height
<input type="checkbox"/>	FZS6032	60"	31.5"	1"
<input type="checkbox"/>	FZS6036	60"	35.5"	1"
<input type="checkbox"/>	FZS6332*	63"	31.5"	1"
<input type="checkbox"/>	FZS6336*	63"	35.5"	1"
<input type="checkbox"/>	FZS6736*	67"	35.5"	1"
<input type="checkbox"/>	FZS7236*	72"	35.5"	1"

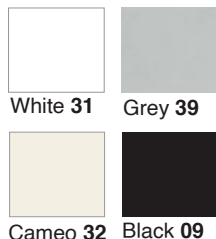
* Meets ADA requirements

Custom Sized Models (Specify Lgth,Depth, RH or LH) can only be used as a Single or Double Threshold

	Model No.	Max Length A	Min Length B	Max Depth A	Min Depth B
<input type="checkbox"/>	CFZS6032	60"	56"	31.5"	29.5"
<input type="checkbox"/>	CFZS6036	60"	56"	35.5"	33.5"
<input type="checkbox"/>	CFZS6332	63"	59"	31.5"	29.5"
<input type="checkbox"/>	CFZS6336	63"	59"	35.5"	33.5"
<input type="checkbox"/>	CFZS6736	67"	63"	35.5"	33.5"
<input type="checkbox"/>	CFZS7236	72"	68"	35.5"	33.5"

To Be Specified: Color

<input type="checkbox"/>	31 White
<input type="checkbox"/>	32 Cameo
<input type="checkbox"/>	39 Grey
<input type="checkbox"/>	09 Black

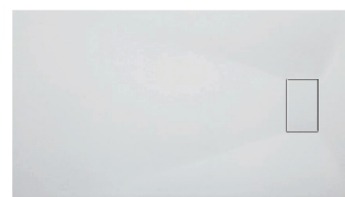
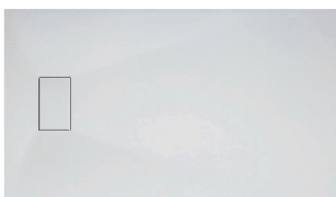
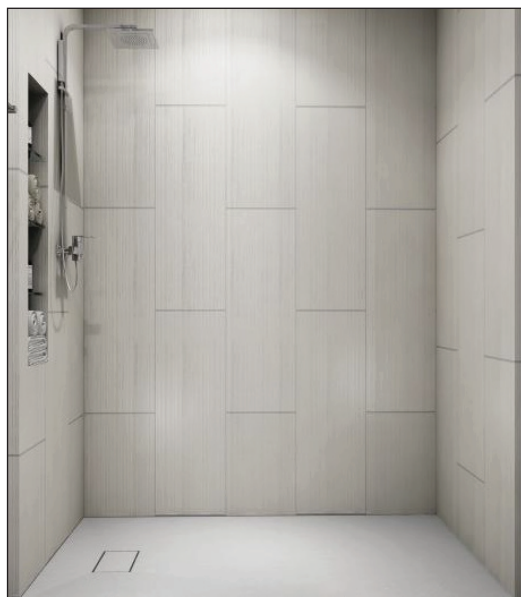


Codes/Standards

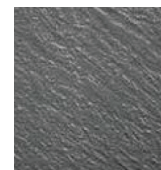
The specified model meets or exceeds the following:
ASTM E662

CSA B45.5/IAPMO Z124

Notes: Install this product according to the installation instructions.



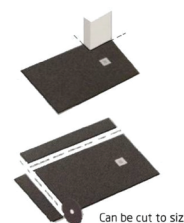
Modern Slip Resistance with a stone look texture. Easy to clean as well as slip resistant.



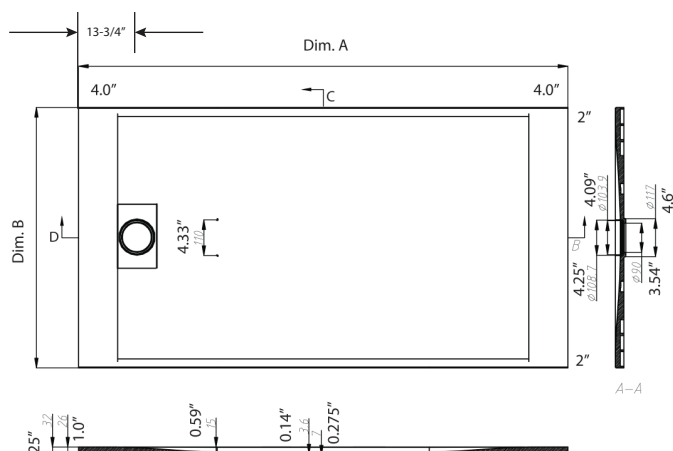
CUSTOMIZABLE BASE

Note: Bases can be built to accommodate unique sizes. Notches can also be cut from the bases to allow for columns in a corner.

Base can be built to custom sizes within certain limitations. Can be trimmed up to 4" in width from side opposite drain or up to 2" from depth. Base is designed to be used as a single, double or triple threshold in stock sizes and single threshold models in custom sizes



Can be cut to size



SHOWER BASES