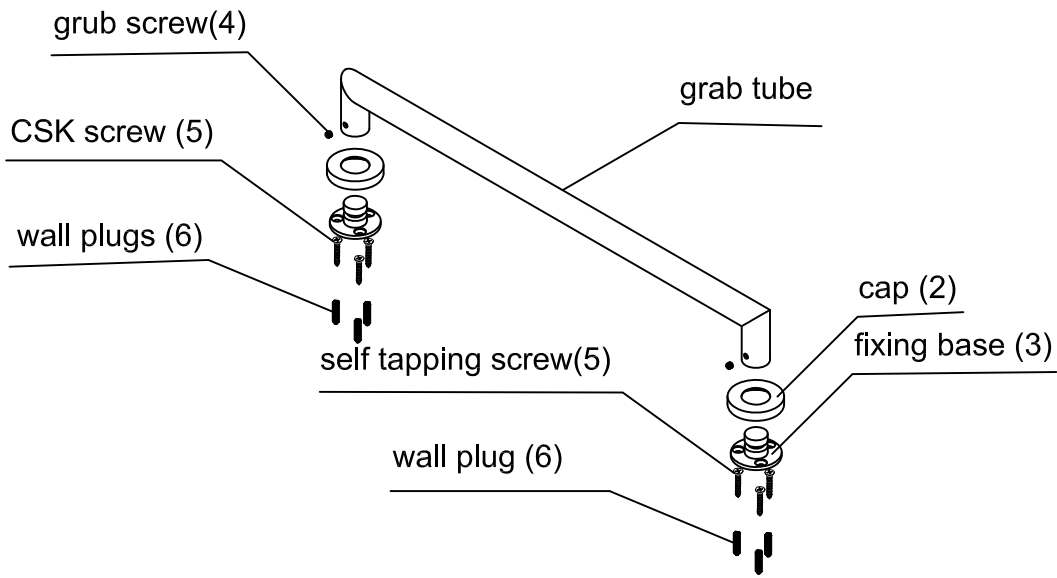
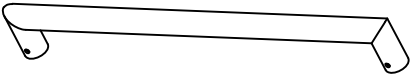



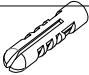




Grab Bar Installation Instructions

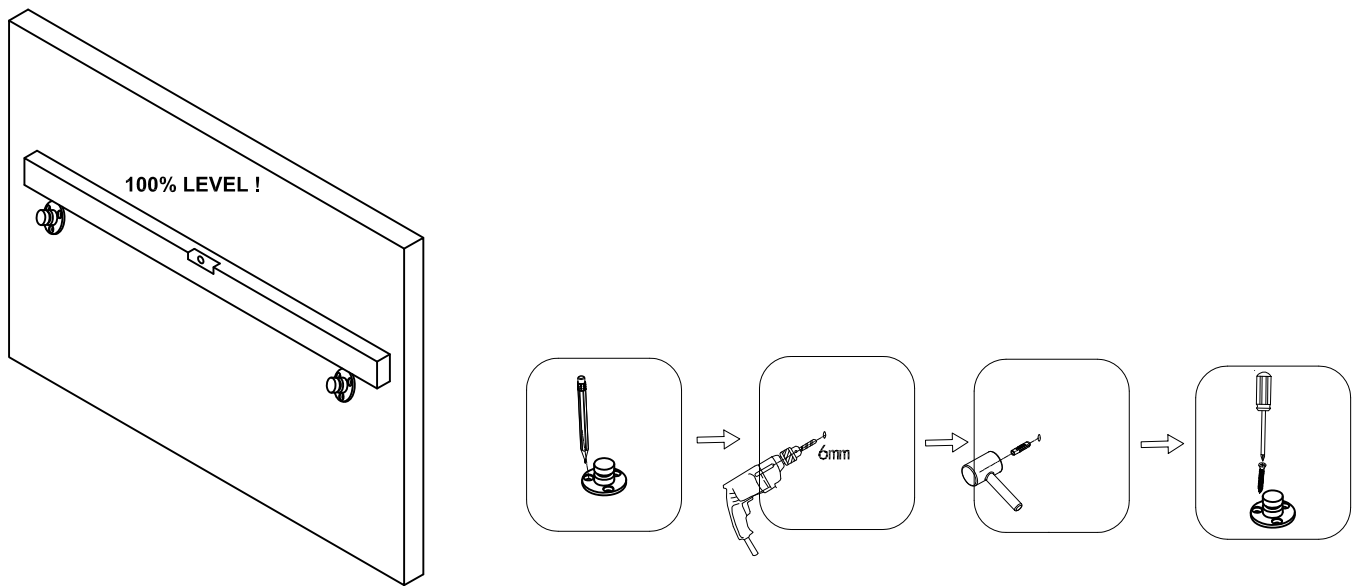
Exploded Drawings



Parts List			
No.	Name	Drawings	Quantity
1	tube		1
2	caps		2
3	fixing base		2
4	grub screws		2
5	wall plugs		3
6	ST screws		3
7	Allen key		1

Step1: Fix the two fixing bases to wall.

Fix fixing base (3) to wall using screw (6). Make sure the bases are 100% level.



Step1: Fix the grab to the two bases

Fit the grab tube to the bases. Tighten the tube to the bases by tighten the grub screws (4).

