



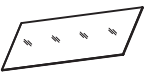



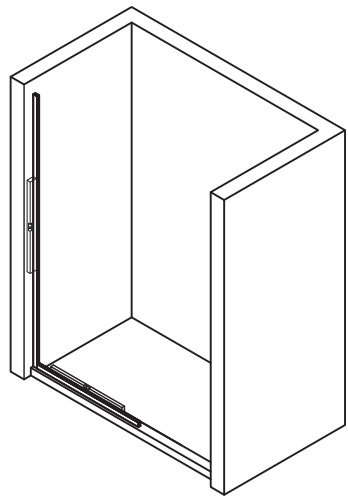


Parts List

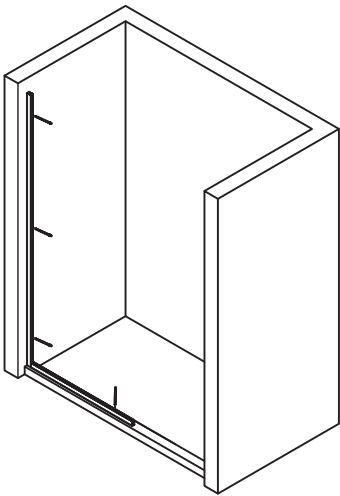
No.	Name	Qty	Drawing	No.	Name	Qty	Drawing
1	wall jamb	1		5	wall plugs-Φ6	4	
2	bottom strip	1		6	wedge gasket for wall jamb	1	
3	glass panel	1		7	wedge gasket for bottom strip	1	
				8	magnetic seal	1	
4	crossing countersunk (ST4*50mm)	4					

Installation Steps



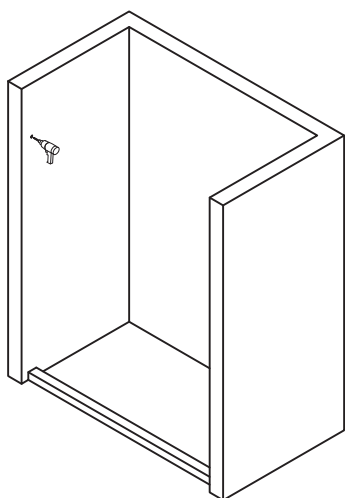
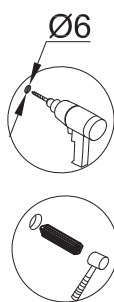
Step 1: Make level

Make sure the shower tray and bottom strip **100% level**, and make sure the wall jamb **100% plumbing**.



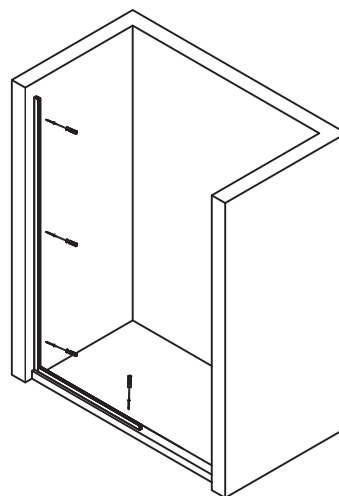
Step 2: Mark holes positions'

Mark holes' positions on the wall and shower tray through the pre-drilled holes on wall jamb and bottom strip. (Make sure no pipes or wire under where to be drilled).



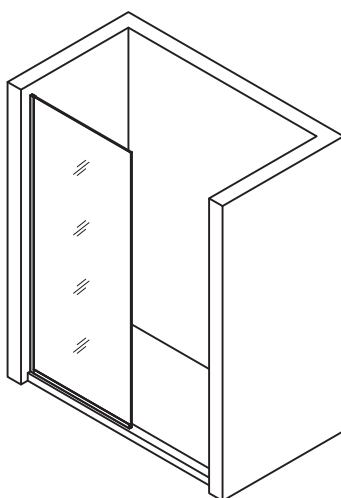
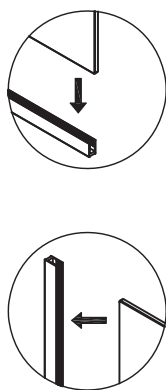
Step 3: Drill holes

Drill holes onto where marked at last step and put in wall plugs.



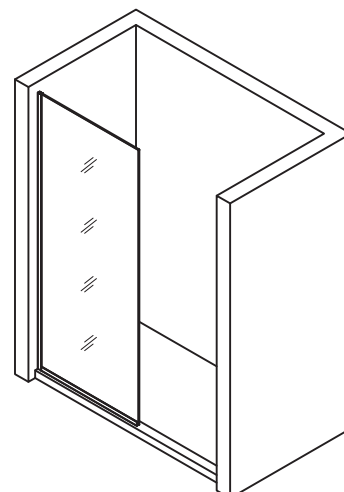
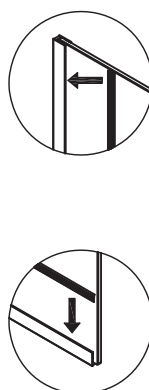
Step 4: Fix frame

Fixed wall jamb to wall and the bottom strip to the shower tray or bottom base.



Step 5: Fit on glass panel

Insert the fixed panel into the wall jamb and the bottom strip.



Step 6: Insert wedge gasket

Insert the wedge gasket into the gap between glass panel and wall jamb, glass panel and bottom strip.

Step 7: Put on magnetic seal

When this fixed panel using with a pivot door, the magnetic seal need to be fit on the edge of the panel. Please make sure the magnetic seal on fixed panel fit the one on the pivot door.

Step 8: Apply silicone

Apply silicone between wall and wall jamb, shower tray (or bottom base) between bottom strip outside only.

Do not use the shower panel within 24 hours!