

Features

- Includes mirror defogging
- Dimmable LED task lighting to 1%
- Compatible with most Triac/Phase-cut dimmers
- Energy efficient LED lighting:

| | |
|------------------------------------|---------|
| Kelvin | 3000** |
| CRI | 90+ |
| Lumens* (Approx) | 1810 |
| Lux* (Approx) | 320 |
| R9 Value* | 50+ |
| Foot-candles* (Approx) | 29 |
| Watt Output - LED | 55w max |
| Watt Output - LED with defogger on | 85w max |

* Measured at 18" from center of the mirror

** Starting in Fall 2021, Vitality Lighted Mirrors are being enhanced to 3000K CCT from 2700K CCT. Orders will be fulfilled with 3000K based on existing inventory.

Construction

- Anodized aluminum back frame
- Quality polished edge mirror
- Power cords installed for easy plugin installation
- Constructed for surface mounting
- Includes installation hardware

Codes/Standards Applicable

Vitality Mirror is UL certified to:

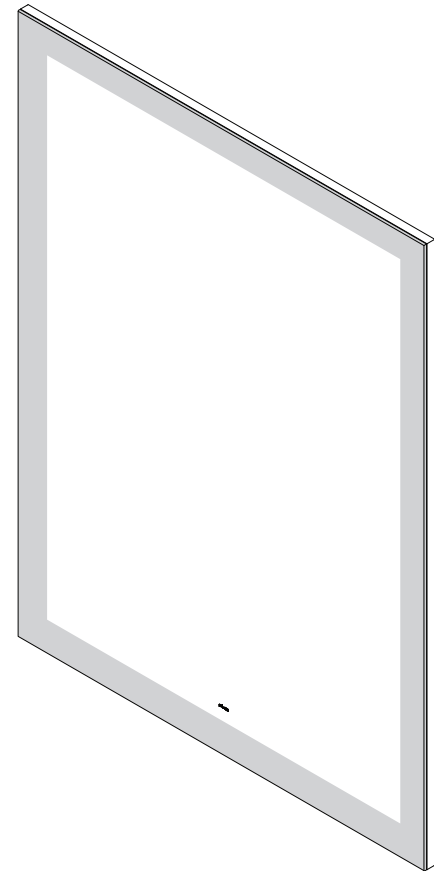
- UL 962
- CSA-C22.2, No. 12-82

Dimensions

Height: 40" (1016 mm)
 Width: 30" (762 mm)
 Depth: 1-3/4" (45 mm)

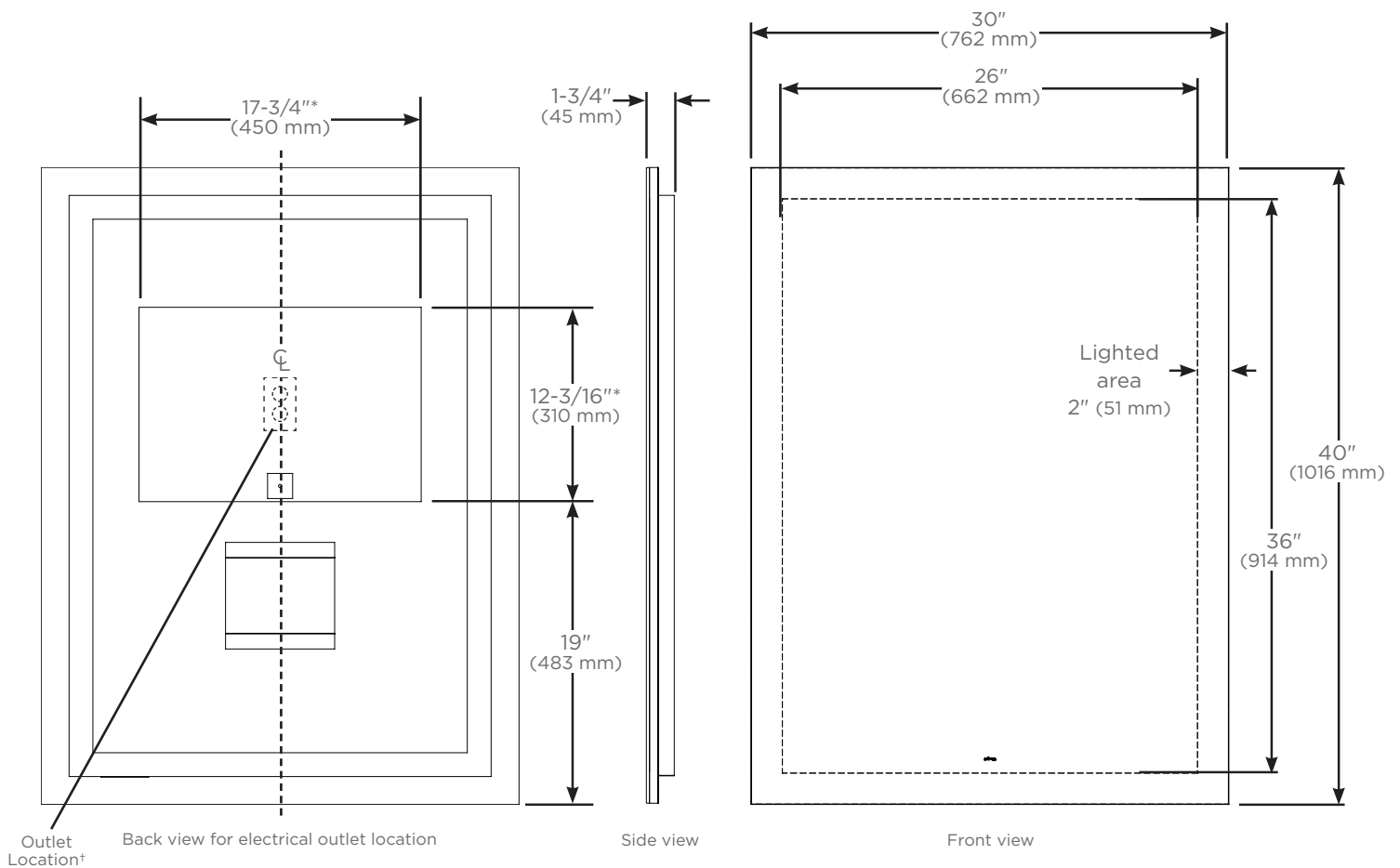
Electrical System

- 120 Vac 60Hz wall outlet as shown in drawing



Model Number Key

| <u>Vitality</u> | <u>Mirror</u> | <u>Width</u> | <u>Height</u> | <u>Shape</u> | <u>Light Pattern</u> | <u>Edge Type</u> | <u>Options</u> | <u>Color Temp</u> |
|-----------------|---------------|--------------|---------------|---------------|----------------------|---------------------|----------------|-------------------|
| Y | M | 30 | 40 | R = Rectangle | P = Perimeter | FP = Flat, Polished | D = Defogger | 3 = 3000K |



* Defogger Size

† See instructions for wiring and location