

Features

- 32" (813) x 18½" (470) x 10" (254) undermount kitchen sink.
- Super single compartment that is the size of a double bowl sink.
- Handcrafted from 16 gauge 304 stainless steel. Channel grooves in sink bottom direct water to drain. Premium brushed finish.
- Includes a stainless steel bottom sink grid and stainless covered square flip-top sink strainer.
- 10mm radius corners.
- 5mm sound deadening pads.
- Fits 36" (914) minimum base cabinet width.

Components

Product includes:
TSG32191Q Bottom Sink Grid
2210Q Square Covered Sink Strainer
Cutout Template
Installation Hardware
Installation Instructions

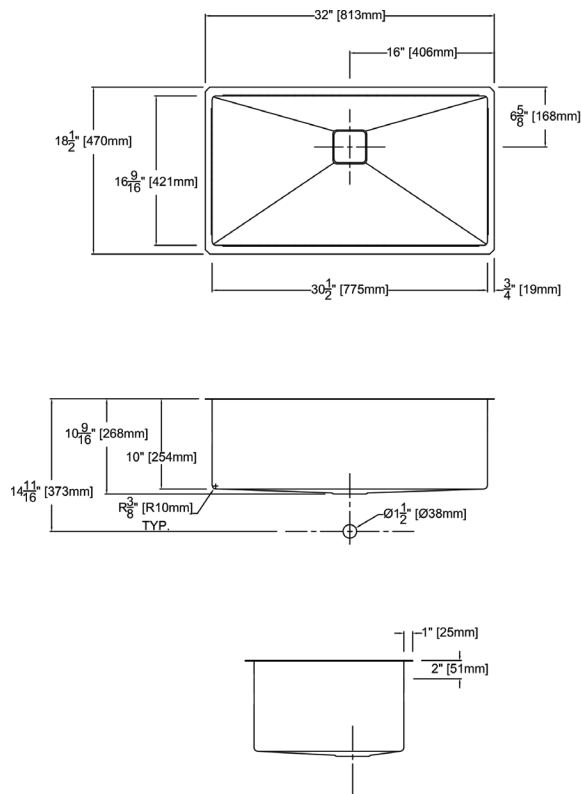
Warranty

- Lifetime Limited Warranty



Specified Model

Model	DUSSQ321910
Overall Dimensions	L32" x W18½" x D10" 813 x 470 x 254
Bowl Dimensions	L30½" x W16⅞" x D10" 775 x 421 x 254
Drain hole:	3½" (89mm)
Shipping Weight	lbs.
Material	16 gauge 304 stainless steel
Installation	under counter mounted
Required	template, included



Codes/Standards

ASME A112.19.3/CSA B45.4

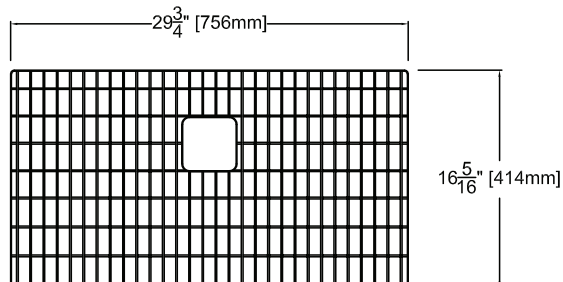
Notes

Install this product according to the installation instructions.

Components

Product includes:

TSG32191Q Bottom Sink Grid



2210Q Square Covered Flip Top Sink Strainer.
Water drains easily when cover is in place. Cover flips
up with easy touch. Polypropylene housing.
Fits standard 3½" opening.

Optional 4010Q Square Covered Flip Top Disposer Strainer is available.
See Accessories to order.