

Features

- 33" (838) x 18½" (470) x 11" (279) undermount kitchen sink.
- Double (large/medium) compartments.
- Handcrafted from 14 gauge 304 stainless steel. Channel grooves in sink bottom direct water to drain. Premium brushed finish.
- Low 6"H divide.
- Beveled ledge around the top edge of the sink. The ledge allows cutting board, colander and other accessories to easily glide across the length of the sink.
- Accessory Pocket in apron front is hidden from view and makes great storage for sponges, brushes and other kitchen tools used daily.
- Includes a stainless steel bottom sink grids, stainless covered flip-top sink and disposer strainers.
- Tight 5mm radius corners.
- Superior 7mm sound deadening pads.
- Fits 36" (914) minimum base cabinet width.

Components

Product includes:

TSGP33192 Bottom Sink Grid Set
2210R Covered Sink Strainer
4010 Covered Disposer Strainer
Cutout Template
Installation Hardware
Installation Instructions

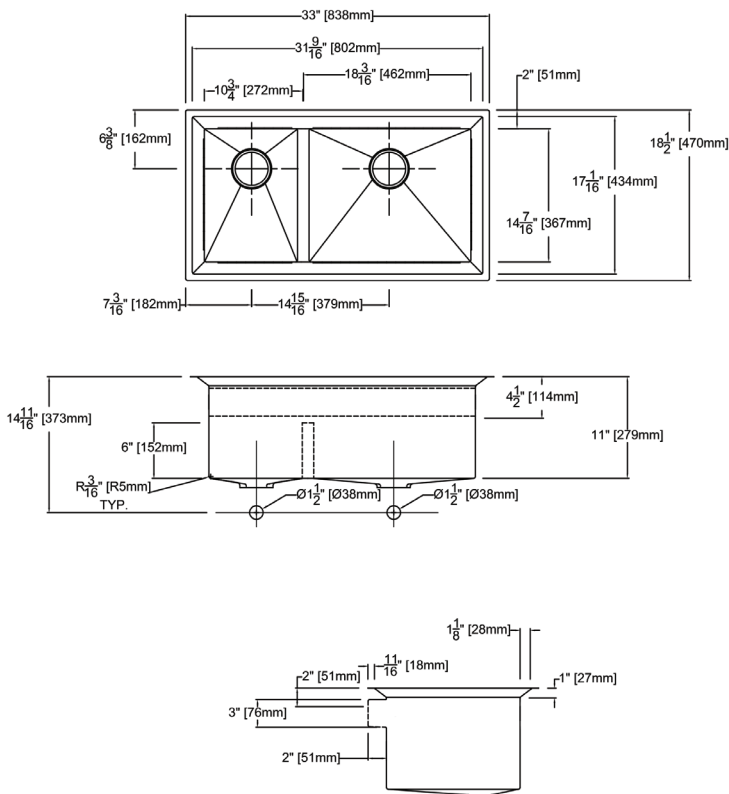
Warranty

- Lifetime Limited Warranty



Specified Model

Model	PUDO331911
Overall Dimensions	L33" x W18½" x D11" 838 x 470 x 279
Bowl Dimensions (Left)	L10¾" x W14⅞" x D11" 272 x 367 x 279
Bowl Dimensions (Right)	L18⅜" x W14⅞" x D11" 462 x 367 x 279
Drain holes:	3⅝" (92mm)
Shipping Weight	50 lbs.
Material	14 gauge 304 stainless steel
Installation	under counter mounted
Required	template, included



Codes/Standards

ASME A112.19.3/CSA B45.4

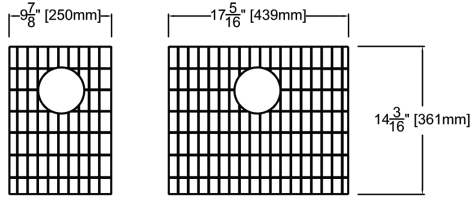
Notes

Install this product according to the installation instructions.

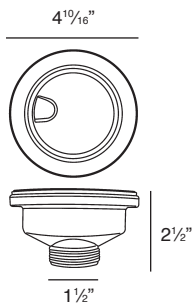
Components

Product includes:

TSGP33182 Bottom Sink Grid Set

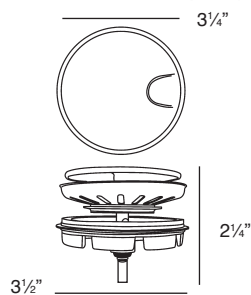


2210R Covered Flip Top Sink Strainer.



Water drains easily when cover is in place. Cover flips up with easy touch. Polypropylene housing. Fits standard 3½" opening.

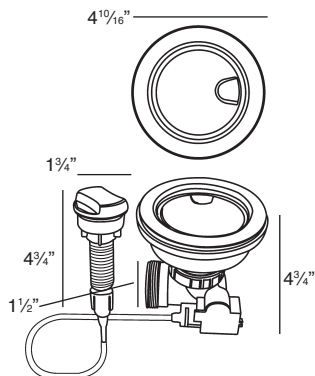
4010 Covered Flip Top Disposer Strainer.



Water drains easily when cover is in place. Cover flips up with easy touch. Polypropylene housing. Top mount installation for 3½" opening.

Optional Accessories

2310 Remote Covered Flip Top Sink Strainer.



Turn the remote knob to open and close drain. Water drains easily when cover is in place. Cover flips up with easy touch. Polypropylene housing. Fits standard 3½" opening. 1 3/8" hole required in countertop for remote installation. Remote cable 25½" L.