

FEATURES

- Single threshold for alcove installation.
- Pre-leveled base with textured bottom.
- Installation for new and existing construction
- Engineered compound material composed of resin, glass, and special fillers formed into sheets. Sheets are placed extreme pressure and heat to form precise radius and angle.
- Base is strong, lightweight, slip resistant and scratch resistant.
- 6" high threshold. Raised front profile. Extended tile flange.
- Replace a bathtub with a shower base without moving existing plumbing. Order by drain location. End drain locations available. 3¼" drain opening. Drain not included.
- Made in the USA.
- 15 Year Limited Residential Warranty / 3 Year Commercial Warranty

COLORS

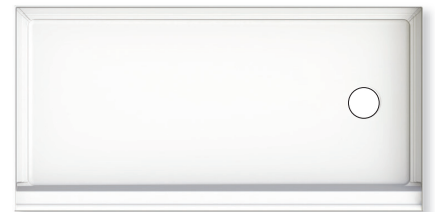
- 2 high gloss colors.

Specified Model

	SIZE	MODEL NO.	Width	Depth	Height
LEFT (L) or RIGHT (R) DRAIN					
<input type="checkbox"/>	60" x 30"	T36030L	60"	30"	7"/6"
<input type="checkbox"/>	60" x 30"	T36030R	60"	30"	7"/6"



Retrofit Tub Replacement
LEFT or RIGHT DRAIN



Rectangular End Drain
T36030L
T36030R (shown)

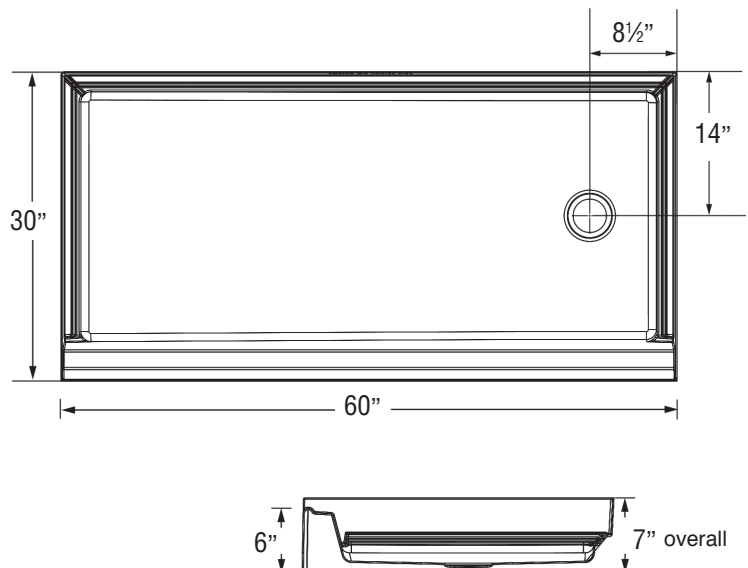
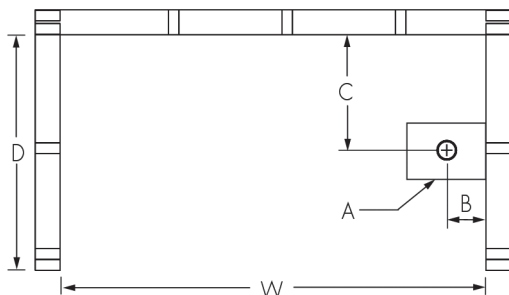
To Be Specified: Color

<input type="checkbox"/>	01 White
<input type="checkbox"/>	08 Biscuit



White 01 Biscuit 08

Framing Dimensions



TYPE	DEPTH (D)	WIDTH (W)	HEIGHT (H)	A	B	C
Alcove	30"	60"	-	Box Out	8½"	14



Made in USA