

FITTINGS INSTALLATION MANUAL



INSTALLATION**PEX + Lead Free Brass Crimp Fittings + Copper Crimp Rings****STEP 1**

Quickly and precisely cut the pipe vertically.

**STEP 2**

After selecting the appropriately sized crimp ring for the pipe, affix the copper crimp ring into position.

**STEP 3**

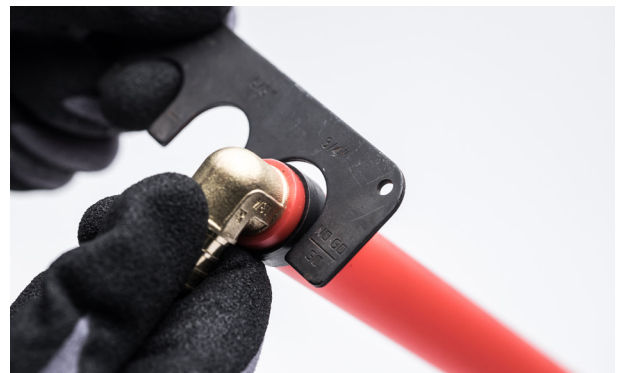
Next, insert the fitting into the pipe until the shoulder of the fitting connects with the pipe. The fitting and pipe should be snug and secure.

**STEP 4**

Select the appropriately sized crimping tool jaw and fitting.

**STEP 5**

Place the fitting into the crimping tool. The crimping jaw must be perpendicular to the pipe. Then, close the jaw of the tool until it is completely closed.

**STEP 6**

Use the Go/No-Go gauge to check if the fitting is secure. The crimp ring should slide no further than the shoulder of the "NO GO" slot.



STEP 1

Quickly and precisely cut the pipe vertically.



STEP 2

After selecting the appropriately sized clamp for the pipe, affix the stainless steel clamp into position. The clamp should be slightly larger than the pipe.



STEP 3

Next, insert the fitting into the pipe until the shoulder of the fitting connects with the pipe. The fitting and pipe should be snug and secure.



STEP 4

Secure the pinch clamp tool to the clamp ear. The clamping jaw must be perpendicular to the pipe. Firmly close the handles fully to crimp the clamp securely onto the pipe and fitting. Utilize the tool's ratcheting mechanism to ensure a tight connection.



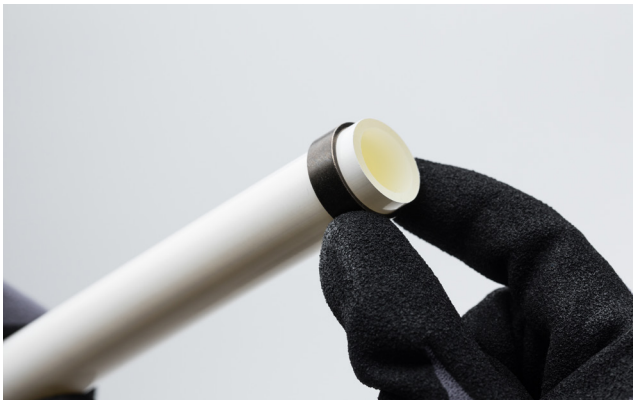
*The clamp should be tight as well as securely and properly closed.

INSTALLATION

PEX + Poly Alloy Crimp Fittings + Copper Crimp Rings

**STEP 1**

Quickly and precisely cut the pipe vertically.

**STEP 2**

After selecting the appropriately sized crimp ring for the pipe, affix the copper crimp ring into position.

**STEP 3**

Next, insert the fitting into the pipe until the shoulder of the fitting connects with the pipe. The fitting and pipe should be snug and secure.

**STEP 4**

Place the fitting into the crimping tool. The crimping jaw must be perpendicular to the pipe. Then, close the jaw of the tool until it is completely closed.

**STEP 5**

Use the Go/No-Go gauge to check if the fitting is secure. The crimp ring should slide no further than the shoulder of the "NO GO" slot.

**STEP 1**

Quickly and precisely cut the pipe vertically.

**STEP 2**

After selecting the appropriately sized clamp for the pipe, affix the stainless steel clamp into position. The clamp should be slightly larger than the pipe.

**STEP 3**

Next, insert the fitting into the pipe until the shoulder of the fitting connects with the pipe. The fitting and pipe should be snug and secure.

**STEP 4**

Secure the pinch clamp tool to the clamp ear. The clamping jaw must be perpendicular to the pipe. Firmly close the handles fully to crimp the clamp securely onto the pipe and fitting. Utilize the tool's ratcheting mechanism to ensure a tight connection.



INSTALLATION

PEX-A + PEX-A Cold Expansion Fittings + Expansion Ring

**STEP 1**

Quickly and precisely cut the pipe vertically.

**STEP 2**

After selecting the appropriately sized expansion ring for the pipe, affix the expansion ring into position.

**STEP 3**

Slide the pipe onto the end of the electric pipe expansion tool. Press and hold the button to expand the ring and pipe. While they are expanding, continually push the pipe further into the tool head until the shoulder of the tool head connects with the pipe.

**STEP 4**

After removing the tool, immediately insert the fitting until its shoulder connects with the pipe.

**STEP 5**

The pipe may take several minutes to seal with the fitting. Apply pressure and twist the fitting to check if the ring is fully sealed.



NOTES

NOTES