

PACKAGE FEATURES

- All components included for fast, easy installation, saves money and time.
- Navien NCB series gas combination boiler. Ultra-condensing efficiency (95% fuel savings) provides money and energy savings over traditional water heaters.
- Taco external ECM high-efficiency circulator pump. Saves up to 85% of electrical energy compared to conventional pumps.
- Heavy duty forged brass air separator. Reduces noise, improves system efficiency & operation, reduces wear on system components, requires no regular maintenance.
- 4 gallon Expansion Tank with quick connect that allows for easy maintenance or replacement.
- 1/2" check valve to prevent water from system to enter the domestic water.
- Full-port ball valves allow easy maintenance and isolation.
- Stainless steel manifold is equipped with air bleeder, supply flow meters, purge valves, shut-off valves, and temperature gauge for easy system control and maintenance.
- Pro-press copper piping and fittings. 3/4" and 1/2" pro-press copper fittings provide secure connections and a professional look.
- 60"H x 30"W x 30"D Aluminum Racking allows for flexible placement. It provides strength and durability while keeping the weight at a minimum.

| Model | TP-A6 |
|--------------------|--|
| Overall Dimensions | H60" x W30" x D30" |
| Navien Boiler | NCB240/240E |
| Taco Circulator | VT2218 ECM High-Efficiency |
| Viega Pex Manifold | 6 Loop Manifold |
| Expansion Tank | Amtrol Extrol 4 gallon |
| Shipping Weight | 350 lbs. |
| Warranty | 10 years heat exchanger, 5 years parts, 1 year labor |

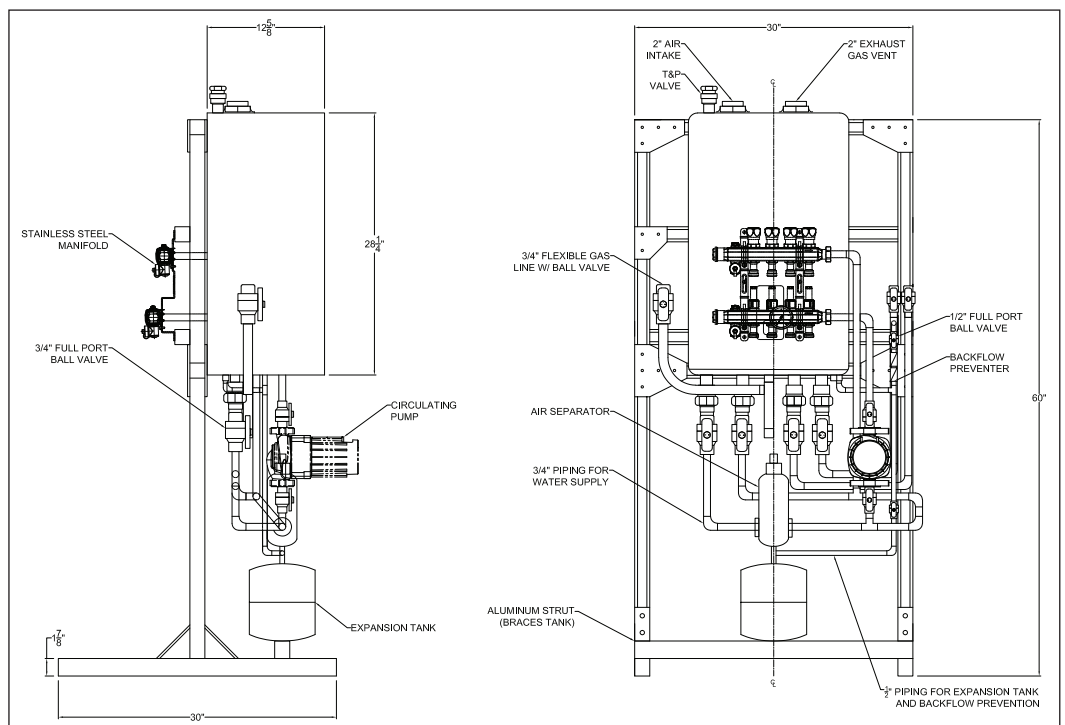


To Be Specified:

| Pump |
|--|
| <input type="checkbox"/> VT2218 (Incl. in Std. Pkg.) |
| <input type="checkbox"/> VR3452 Optional Upgrade |

| Manifold |
|--|
| <input type="checkbox"/> 6 Loop (incl. in Std. Pkg.) |
| <input type="checkbox"/> 9 Loop - Optional Upgrade |
| <input type="checkbox"/> 12 Loop - Optional Upgrade |
| <input type="checkbox"/> 18 Loop - Optional Upgrade |
| <input type="checkbox"/> 24 Loop - Optional Upgrade |

| Wi-Fi Control on Boiler |
|---|
| <input type="checkbox"/> PBCM-AS-001 NaviLink™ Optional accessory |



Tankless Combi-Boiler Package



Specified Package Components

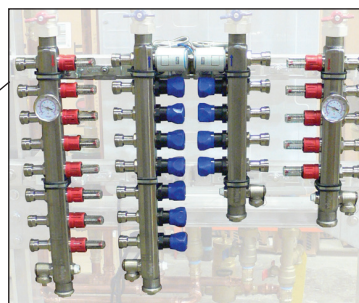
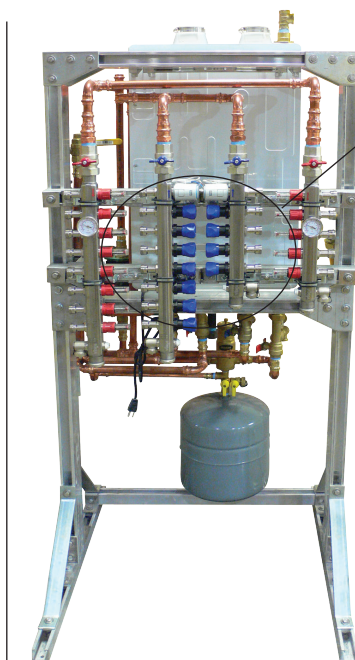
Navien NCB-240/240E Combination Boiler

- Gas Input Range: 120,000 (199,000 for DHW) to 18,000 BTU/h
- Compatible with natural gas (NG) and propane (LPG) (field convertible)
- AFUE Rating: NCB-240/NCB240E - 95.0% (NG/LPG)
- Super condensing efficiency provides 95% fuel savings.
- SCH 40, 2" PVC venting up to 60', 3" PVC venting up to 150' (pvc pipe not provided).
- Gas Inlet, 3/4". 1/2" gas line can be used if less than 24' from source. (Gas line not provided).
- DHW Flow Rate Capacity: 4.5 GPM. DHW priority (based off of 77°F temperature rise).
- Automatic water filling system. Integrated controls.
- Dual stainless steel heat exchangers for optimum efficiency and durability.
- Certified design according to ANSI Z21.13-2014/CSA 4.9-2014
- Backlit front panel - allows adjustment of hot water temperatures and boiler functions.
- Internal circulation pump - includes a primary circulation pump and air vent for added value & convenience.
- Low voltage terminal strip - contacts for thermostat or zone controller, outdoor reset, 24 VAC device relay, air handler interrupt, and LWCO.
- Temperature options - two boiler set points: hydronic heating temperature settings range from 77°F up to 194°F and from 86°F to 140° for DHW temperatures.
- Built-in control system that is designed to keep the unit plumbing frost-free in winter conditions.
- Certified by CSA, ASME, NSF/ANSI 372 for low lead (DHW only), SCAQMID
- 10 year heat exchanger, 5 year parts warranty and 1 year labor warranty.

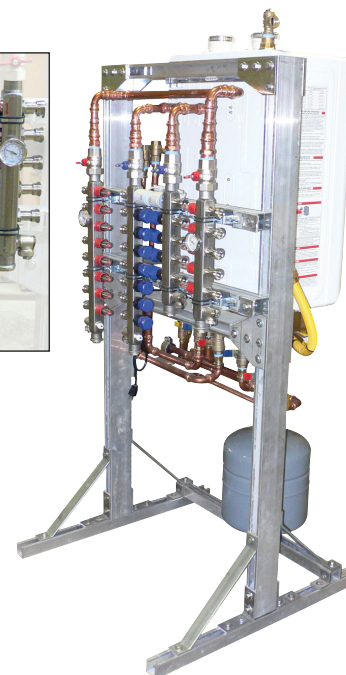
| | Standard Pump Taco VT2218 | Upgraded Pump Taco VR3452 |
|---------------------------|--|--|
| Motor | High-Efficiency ECM uses up to 85% less electricity | High-Efficiency ECM uses up to 85% less electricity |
| LED Display | operating mode, temperature or speed setting, watts, supply & return | operating mode, pressure, speed setting, watts, flow and RPM |
| Max. Shut-off Head | 22 feet | 34 feet |
| Max. Flow | 18 gpm | 52 gpm |
| Electrical Specs. | 1 phase, 110-120V | 1 phase, 110-120V or 1 phase, 200-240V |
| Operating Power | 9W to 58W | 1/4HP, 10-180W |
| Casing | Cast Iron | Cast Iron |
| Acceptable Usage | Water or maximum of 50% water/glycol solution | Water or maximum of 50% water/glycol solution |
| Certifications & Listings | Intertek ETL Listed FCC | Intertek ETL Listed CSA Standard 22.2 No 108 UL Standard 178 |



Front View



Viega Pex Manifold
with flow control valve



Rear Views