



TRINITY COLLECTION

TRINITY WALL PANELS, made from a state of the art technology that creates a panel that in many ways is better than nature. Super high resolution digital images are transferred to a specialized aluminum panel that yields an appearance of genuine stone, porcelain or concrete. Two sheets of high quality aluminum are sandwiched between a resin and mineral core that provides strength and structure. High gloss or luxury honed matte panels have the look and feel of gorgeous natural stone or highly polished large format porcelain panels.



Trinity captures all of the beauty of large format natural marble or porcelain slabs without the intrinsic difficulty of installation caused by the extra weight, sensitivity to chipping or crazing, or by the labor intensive fabrication.

Lightweight 1.3 lb./sq. ft. panels are easy to transport. And not only are the panels easy to carry they are also easy to install. Regular wood cutting tools is all that is required

Easy to clean. Trinity panels can be cleaned with everyday cleaners. And maintenance is a breeze, since surfaces are so smooth that dirt is repelled. TRINITY panels resist bacteria and stains with their ultra smooth surface.

Panel Sizes: 39-3/8" x 96", 48" x 96"

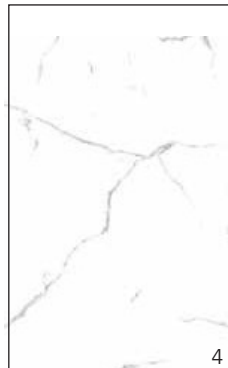
Surface Finishes: Ultra High Gloss or Honed Matte for marble patterns. Textured surfaces for Concrete panels.



TRINITY COLLECTION

PANELS are designed to be as good as NATURE  
*Random Panel Designs for a Natural Look.*

As in any natural stone configuration, no two slabs are precisely the same. Nature requires slight deviations even in the most mundane patterns. However, the natural movement in these patterns lets one's eyes discern that this is a natural material. Likewise TRINITY panels are also nuanced. For each pattern, each slab has 5 subtle yet different panel patterns that actually replicate the natural movement of real stone. The result is technology replicating reality.



◀ **K I01**  
**WHITE CARRARA**  
 Finish: Polished or Honed

TRINITY Panels are simply ideal for the bath. Natural marble patterns, with pure waterproofing properties, provide an environment that is perfect for the bath.

**K I32**  
**SABANA CREME**  
 Finish: Polished or Honed ▼

**K I31 ▶**  
**SABANA GREY**  
 Finish: Polished or Honed

Easy to clean, naturally beautiful, simple to maintain and a surface that resists the growth of bacteria.





PANELS are designed to be used in more than just the BATH.  
*Trinity Panels can be used in every interior room of the Home.*

Expand the concept of a "bathroom" panel to now include an entire room panel. Not only are Trinity panels ideal for the shower or tub area, they are simply divine for other areas of your home or office. Four foot wide panels join with either color matched silicone adhesive or a color matched minimalist seam trim. The result is the look of natural stone at a considerable cost savings.

SAMUEL  
MÜELLER

TRINITY COLLECTION



◀ K I03  
**BLACK CARRARA**  
 Finish: Polished or Honed

TRINITY Panels are perfect for a back-splash. Natural marble patterns, with pure waterproofing properties, as well as being heat resistant are ideal. Also panels are simple for cutting outlets and switches.



TRINITY Panels are simply ideal for the bath. Natural marble patterns, with pure waterproofing properties, provide an environment that is perfect for the bath.

◀ K I01  
**WHITE CARRARA**  
 Finish: Polished or Honed



K I01  
**WHITE CARRARA Backsplash**  
 Finish: Polished or Honed

SamuelMueller®



TRINITY COLLECTION

## BOOKMATCHED PANELS Reveal the Split Stone Look

As in natural stone slabs, stone material can be split in two reflecting and matching vein patterns. Equally in Trinity panels, we have created an interesting bookmatched panel system. Our bookmatched panels have two possible patterns. Each 78" wide (trimmable) x 96" high kit is able to form two different bookmatched patterns. In addition, these panels are also able to form a standard non book-matched pattern as well.



Bookmatched panels always can be oriented in two different patterns simply by flipping the panel direction.

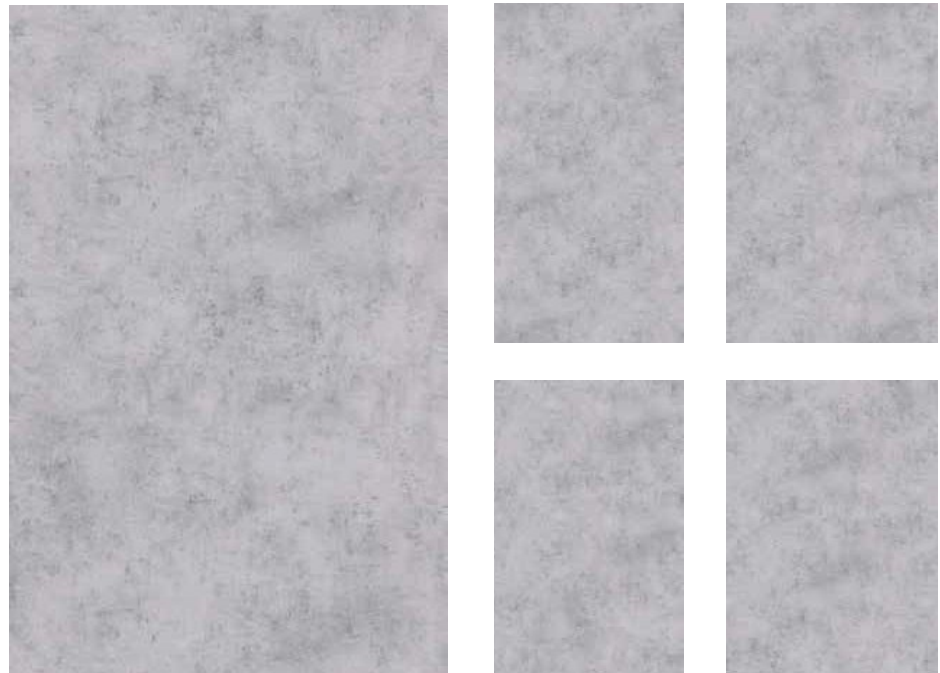
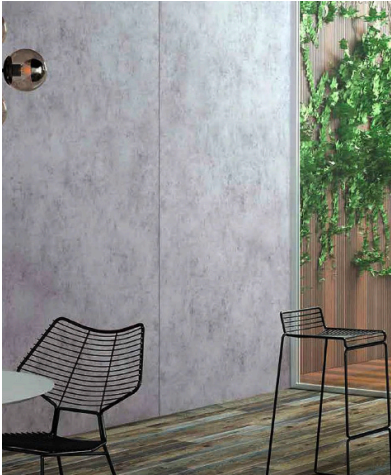


## TEXTURED CONCRETE for the Industrial Urban Vibe

Concrete Panels have a subtle texture to the surface to emphasize the character of concrete. Light grey shades offer a realistic appearance to the panels that yields the beauty of concrete without the problems of cracking, crazing or fissures.



TRINITY COLLECTION



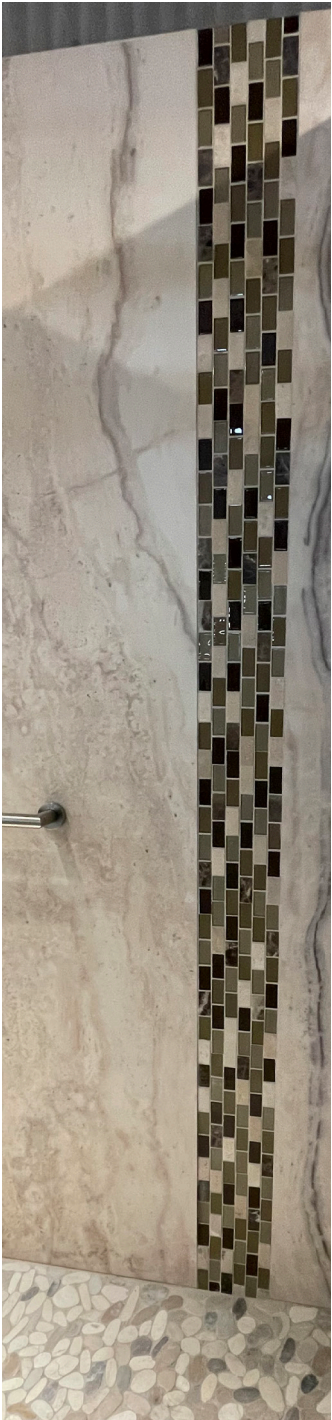
Panel Sizes: 39-3/8" x 96", 48" x 96" Surface Finishes: Textured  
Patterns: All concrete patterns come in 5 different natural renderings.  
The panels are random to give the effect of a natural material.  
The soft texture has a finish that mimics real concrete.



TRINITY COLLECTION

Deco Tile Trim Patterns along with Real Marble pre-grouted Shower Bases Create A Custom Look

Deco Strips are 6" wide vertical strips that are (2) 48" long strips are used for a 96" high wall. The deco strips coordinate with the Trinity wall panels in color as well as thickness. The (4) patterns of Deco strips are the same thickness as the panels in order to be nearly flush with the wall panels. Deco strips have a thin aluminum backer with the marble or glass tiles pre-attached to the backer. The Deco strips are pre-grouted for simple installation.



New real marble shower bases that come pre-grouted and ready to install are built on our SMC sheet molding compound ready to tile shower base for a luxurious look. Marble shower bases are available in 60"x32" and 60"x36" sizes with RH or LH drains

DECO STRIP KITS  
AVAILABLE IN 4 ATTRACTIVE PATTERNS



Hexagon Off-White  
HO



Linear Creme  
LC



Weaver Grey  
WG



Weaver White  
WW

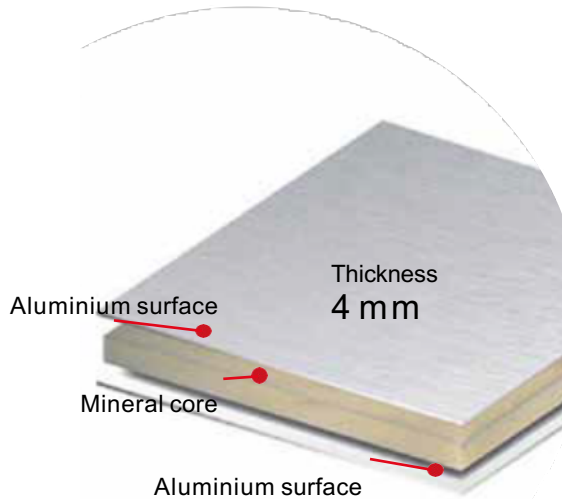


Sleek & Contemporary; Surfaces and Trim that provides a Modern Look for the bath or any room in the house

# SAMUEL MÜELLER

## TRINITY COLLECTION

Trinity wall panels can be cut or trimmed with conventional tools. No special blades or hybrid equipment is required. Installation to a water resistant "green board" with silicone adhesive secures the panels to the wall.



Light Weight only 1.2 lbs./sq. ft.

Trinity wall panels are an aluminum sandwich product with a fi m resin and mineral core. The white panels are then printed with a dye sublimation printing technique that produces a panel that defies eality. The panels are then coated with a hard clear resin surface that guards against UV decomposition as well as provides intense strength and resistance to scratches. The surface can be either super high gloss, subtle softly honed, or textured.

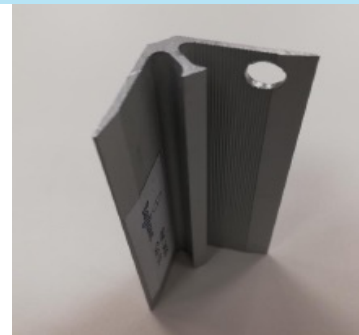
### Finish Trim



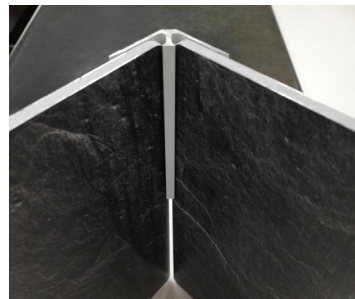
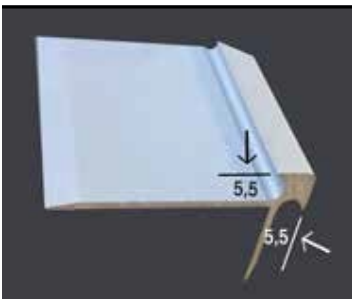
**Edge Trim**



**Seam Trim**



**Inside Corner**



**Outside Corner**

Trinity has slim contemporary trim pieces that finis the panels just like porcelain panels. Trim pieces are also available in matching powder coated finishes

In addition to trim pieces, Trinity can also be sealed with color matched silicone creating a seamless installation.



# SAMUEL MÜELLER

## TRINITY COLLECTION

Trinity wall panels. Beauty, simplicity and realism. These gorgeous wall panels are economical as well as attractive.

- Trinity is easy to cut and install as it is light weight and extremely friendly to trim.
- Trinity is attractive with realism so vivid that you will not believe it is not stone
- Trinity surfaces are available in high gloss, soft matte honed and subtly textured to get the look that you want
- Trinity is long lasting and resists scratches for durability to last years and years.

